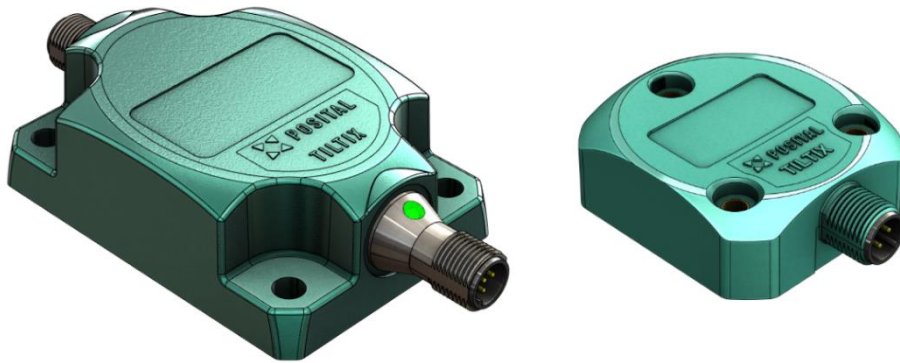


TILTIX MEMS AKS-3 INCLINOMETER
WITH CANOPEN INTERFACE



User Manual

TILTIX MEMS AKS-3 INCLINOMETER WITH CANOPEN INTERFACE

1.1.1 Content

1.1.1	Content	2	1.1.7.7	PDO Transmission	24
1.1.2	General Safety Advice	5	1.1.7.8	Object 1800h: 1st Transmit PDO Communication Parameter.....	24
1.1.2.1	Important Information	5		Programming example #1 Transmission Type (for NN=1)	24
1.1.3	About this Manual	6	1.1.7.9	Object 1801h: 2nd Transmit PDO Communication Parameter.....	25
1.1.3.1	Background.....	6	1.3.1.1	Transmission Mode	27
1.1.3.2	Version Management.....	6	1.3.1.2	Inhibit Time.....	27
1.1.3.3	Imprint.....	6	1.3.1.3	Event Timer.....	27
1.1.3.4	Copyright.....	6			
1.1.3.5	User Annotation	6	1.3.1.5	Object 1A00h: 1st Transmit PDO Mapping Parameter.....	28
1.1.4	Introduction	6	1.3.1.6	Object 1A01h: 2nd Transmit PDO Mapping Parameter.....	28
1.1.4.1	TILTIX Inclinomter.....	7		Programming example #2 Change TPDO (for NN=1):.....	28
1.1.4.2	CANopen Interface	7	1.4	Object 1A01h: 3rd Transmit PDO Mapping Parameter.....	30
1.1.4.3	TILTIX AKS CANopen.....	7	1.5	Object 1A01h: 4th Transmit PDO Mapping Parameter.....	30
1.1.4.4	Typical Applications of TILTIX AKS	8	1.5.1.1	Types of SDO.....	31
1.1.5	TILTIX – Modes and Parameter.....	9	1.5.2	Working with Schneider PLC.....	33
1.1.5.1	Pre-Operational Mode.....	10	1.5.2.1	Types of SDO.....	33
1.1.5.2	Operational Mode	10	1.5.2.3	Software Project Information	34
1.1.5.3	Stopped Mode.....	11	1.5.2.4	Controller Description.....	34
1.1.5.4	Re-Initialization of the Inclinomter	11	1.5.2.5	CANopen Master Configuration	34
1.1.5.5	Boot-up Procedure.....	12	1.5.2.6	Connection Network Setup.....	35
1.1.5.6	Usage of Layer Settings Service (LSS) 12		1.5.3	Configuration.....	36
1.1.6	Installation.....	13	1.5.3.1	TILTIX Process Data Objects (PDO) Mapping	36
1.1.6.1	Accessories.....	13	1.5.3.2	TILTIX CANopen Node Configuration	36
1.1.6.2	Pin Assignment	13	1.5.3.3	CANopen bus network configuration ..	36
1.1.6.3	Installation Precautions	15	1.5.3.4	Linking of CANopen Master and TILTIX Transmit-PDOs.....	37
1.1.6.4	Mounting Instructions	15	1.5.3.5	TILTIX & Controller Memory Configuration.....	37
1.1.6.5	Bus Termination.....	16	1.5.3.6	Debugging.....	37
1.1.6.6	LED Definition	17	1.5.3.7	Run	39
1.1.6.7	Measurement Axes	18	1.5.3.8	Resetting CANopen Communication .	39
1.1.6.8	Orientation and Direction of Accelerometer and Angular Rate	20			
1.1.7	TILTIX Software Configuration.....	21			
1.1.7.1	Default Factory Settings.....	21			
1.1.7.2	Active Programming Objects.....	21			
1.1.7.3	Programmable Parameters	22			
1.1.7.4	Command Description.....	22			
1.1.7.5	Data Length of Commands	22			
1.1.7.6	Frequently Used Commands	23			

TILTIX MEMS AKS-3 INCLINOMETER WITH CANOPEN INTERFACE

1.5.3.9	Resetting CANOpen Nodes	39	1.10	Object 3310h: Angle Hysteresis	56
1.5.3.10	Position Readout.....	40	1.10.1.1	Object 3350h: Acc Butterworth cut-off frequency	56
1.5.3.11	Readout Using Animation Table	40	1.10.1.2	Object 3351h Angular Rate Butterworth Filter	57
1.5.4	Frequently Asked Question.....	42	1.10.1.3	Object 3390h: Resolution Acceleration	57
1.5.5	Appendix A: TILTIX CANopen Objects	46	1.11	Object 3391h: Resolution Angular Rate Gyroscope	58
1.5.5.1	Object 1000h: Device Type.....	46	1.13	Object 3403h-3405h: Acceleration 16	58
1.5.5.2	Object 1001h: Error Register	46	1.14	Object 3411h: Temp MEMS 16	59
1.5.5.3	Object 1003h: Pre-Defined Error Field.....	46	1.16	Object 3417h-3419h: Angular Rate Bias 16	59
1.5.5.4	Object 1005h: COB-ID Sync	47	1.17	Object 341Ah-341Ch: Gravity 16.....	59
1.5.5.5	Object 1008h: Mfr Device Name	47	1.18	Object 341Dh-341F: Non-gravitational acceleration 16	60
1.5.5.6	Object 1009h: Mfr Hardware Version	47	1.22.1.1	Object 6011h: Slope Long16 Operating Parameter	63
1.5.5.7	Object 100Ah: Mfr Software Version	47	1.22.1.2	Object 6012h: Slope Long16 Preset Value	63
1.5.5.8	Object 100Ch: Guard Time	47		Programming example #5 Preset Value (for NN=1):.....	64
1.5.5.9	Object 100Dh: Life Time Factor	48	1.22.1.3	Object 6013h: Slope Long16 Offset ...	64
1.5.5.10	Object 1010h: Store Parameters.....	48	1.22.1.4	Object 6014h: Differential Slope Long16 Offset.....	64
1.5.5.11	Object 1011h: Restore Parameters....	49	1.23	Object 6020h: Slope Lateral16	65
1.5.5.12	Object 1014h: COB-ID Emergency	49	1.23.1.1	Object 6021h: Slope Lateral16 Operating Parameter	65
1.5.5.13	Object 1016h: Consumer Heartbeat Time	50	1.23.1.2	Object 6022h: Slope Lateral16 Preset Value	66
1.5.5.14	Object 1017h: Producer Heartbeat Time	50	1.23.1.3	Object 6023h: Slope Lateral16 Offset	66
1.5.5.15	Object 1018: Identity Object.....	50	1.23.1.4	Object 6024h: Differential Slope Lateral16 Offset.....	66
1.5.5.17	Object 2300h: Save Parameter with Reset.....	51	1.23.1.5	Object 6114h: Differential Slope Long32 Offset (A_S360).....	67
1.5.5.18	Object 2600h: Preset X-Axis (90° Version) / Preset (360° Version).....	51	1.24	Respective 32 bit Objects Slope long/lateral.....	68
1.5.5.19	Object 2601h: Preset Y-Axis (80° Version).....	52	1.24.1	Appendix C: Output Graphs	69
1.5.5.20	Object 3000h: Node Number	52	1.24.1.1	TILTIX 360: CANopen Output Values AxS-360-1-Cxxx-Vxx-xx	69
	Programming example #3 Node.....	52	1.24.1.2	TITIX 090 : CANopen Output Values AxS-090-2-Cxxx-Hxx-xx	70
1.5.5.21	Object 3001h: Baud rate	53	1.24.1.3	TITIX 180 : CANopen Output Values AxS-180-E-Cxxx-Hxx-xx.....	71
	Programming example #4 Baudrate.....	53			
1.5.5.22	Object 3002h: Termination Resistor... ..	54			
1.5.5.23	Object 3005h: Auto Boot Up	54			
1.6	Object 3200h: Angle Mode.....	55			
1.7	Object 3250h: Preset Mode	55			
1.8	Object 3300h: Range Limit Slope Long	55			
1.9	Object 3301h: Range Limit Slope Lateral.....	56			

**TILTIX MEMS AKS-3 INCLINOMETER
WITH CANOPEN INTERFACE**

1.24.2	Appendix D: Output Graphs with Preset and Offset.....	72	13.2	AxS with programmed offset of 20° and effect on Roll axis output	73
1.24.2.1	AxS with programmed offset of 20° and effect on X/Y/Pitch axis output	72	1.24.3	Glossary	74
			1.24.4	Contact.....	77

TILTIX MEMS AKS-3 INCLINOMETER WITH CANOPEN INTERFACE

2 General Safety Advice

3 Important Information

Read these instructions carefully, and have a look at the equipment to become familiar with the device before trying to install, operate, or maintain it.

The following special messages may appear throughout this documentation or on the equipment to warn of potential hazards or to call attention towards information that clarifies/simplifies a procedure.

Please Note: Electrical equipment should be serviced only by qualified personnel. No responsibility is assumed by POSITAL for any consequences arising out of the use of this material. This document is not intended as an instruction manual for untrained personnel.



The addition of this symbol to a Danger or Warning safety label indicates that an electrical hazard exists, which will result in personal injury if the instructions are not followed.



This is the safety alert symbol. It is used to alert you to potential personal injury hazards. Obey all safety messages that follow this symbol to avoid possible injury or death.

TILTIX MEMS AKS-3 INCLINOMETER WITH CANOPEN INTERFACE

4 About this Manual

5 Background

This user manual explains how to install and configure the TILTIX AKS inclinometer with a CANopen interface with illustrations from a Schneider TWIDO® PLC.

5.1.1.1 Version Management

- Updated On: 2024-09-24
- Document Name: Manual_TILTIX-AKS3_CA03.pdf

5.1.1.2 Imprint

FRABA B.V.
Jan Campertstraat 5,
NL-6416 SG Heerlen
T +49 221-96213-0
info@fraba.com, www.fraba.com

5.1.1.3 Copyright

CANopen® and CiA® are registered community trademarks of CAN in Automation e.V.

© FRABA B.V., all rights reserved – Claims copyright on this documentation. It is not allowed to modify, extend, or hand over to a third party and to

copy this documentation without written approval by FRABA B.V. Nor is any liability assumed for damages resulting from the use of the information contained herein. Further, this publication and features described herein are subject to change without notice.

5.1.1.4 User Annotation

All readers are highly welcome to send us feedback and comments about this document.
Depending on your region you can reach us by

e-mail at the following e-mail addresses. For America info@posital.com, for Asia info@fraba.sg, for Europe info@posital.eu.

6 Introduction

This manual explains how to install and configure the TILTIX AKS inclinometers with a CANopen

TILTIX MEMS AKS-3 INCLINOMETER WITH CANOPEN INTERFACE

interface, suitable for industrial, military and heavy duty applications. The TILTIX CANopen is based on the DS410 standard.

6.1.1.1 TILTIX Inclinomter

TILTIX inclinometers sense and measure the angle of tilt (inclination/slope/elevation) of an object with respect to the force of gravity.

The basic principle behind this TILTIX inclinometer is a Micro-Electro-Mechanical Systems (MEMS) sensor cell that is embedded to a fully molded ASIC.

The angle is measured with the relative change in electrical capacitance in the MEMS cell.

The AKS series of inclinometers is available in two variants. First, a single axis measurement variant with a range of 360° and the other variant, a dual axis measurement capable TILTIX model with a range of $\pm 90^\circ$.

6.1.1.2 CANopen Interface

CANopen is based on the Controller Area Network (CAN) that was developed by automotive industries in the 80s. The application protocol CANopen was introduced by the multi vendor association CAN in Automation (CiA) to ensure a full compatibility of industrial automation products. It is a multiple access system (maximum: 127 devices), which means that all devices can access the bus. These devices are the components of the CANopen bus.

In simple terms, CANopen works as a client-server model. Each device checks whether the bus is free, and if it is free the device can send messages. If two devices try to access the bus at the same time, the device with the higher priority level has permission to send its message first. Devices with the lowest priority level must cancel their data transfer and wait before re-trying to send their message.

6.1.1.3 TILTIX AKS CANopen

The TILTIX CANopen inclinometer corresponds to the inclinometer profile DS 410 CANopen standards. It is available in a heavy-duty housing, and two measurement variants; the single axis measurement variant with a range of 360° and a dual axis measurement capable TILTIX model with a range of $\pm 90^\circ$. In addition to high resolution, accuracy and protection class of IP69K, the inclinometer ignores external accelerations and has

a built-in active linearization and temperature compensation. This makes TILTIX AKS suitable for dynamic machines, harsh environments and versatile applications in industrial, heavy duty and military applications.

The inclinometer supports the following operating modes:

TILTIX MEMS AKS-3 INCLINOMETER WITH CANOPEN INTERFACE

- | | |
|--|--|
| <ul style="list-style-type: none"> - Polled mode: The position value is transmitted only on request. - Cyclic mode: The position value is sent cyclically (regular, adjustable intervals) on the bus. - SYNC mode: The position value is sent after a synchronization message (SYNC) is received. The position value is sent every n SYNCs ($n \geq 1$). | <ul style="list-style-type: none"> - State change mode: The position value is transmitted whenever the position of the inclinometer changes (minimum time interval settable). <p>Various software tools for configuration and parameter-setting are available from different suppliers. It is easy to align and program the inclinometers using the EDS (electronic data sheet) configuration file provided. (Refer to section 3.1)</p> |
|--|--|

6.1.1.4 Typical Applications of TILTIX AKS

- | | |
|---|--|
| <ul style="list-style-type: none"> - Cranes and Construction Machinery - Mobile Machinery - Agriculture Machinery - Elevated Platforms - Mobile Lifts and Fire Engines | <ul style="list-style-type: none"> - Automated Guided Vehicles (AGV) - Automatic Assembling Machinery - Boring and Drilling Applications - Leveling and Flattening - Robotic applications |
|---|--|

7 CANopen Versions CA01 and CA03

The AKS CANopen is available in the two different versions which can be distinguished in the typekey AKS-xxx-x-**CA01**-xx3-xx and AKS-xxx-x-**CA03**-xx3-xx.

CA01 represents the backward compatible CANopen version. These versions can be used as replacement for the older generation AKS-xxx-x-**CA01**-xx2-xx versions, where the same EDS file can be used

CA03 represents the CANopen version with new features like programmable angle versions and additional TPDOs that can be used

TILTIX MEMS AKS-3 INCLINOMETER WITH CANOPEN INTERFACE

7.1.1 TILTIX – Modes and Parameter

The purpose of this chapter is to describe the available configuration parameters of the TILTIX inclinometers with CANopen interface. Before going into details the following information describes useful technical terms and acronyms for CANopen network communication.

Node-ID	In the CAN network each device has a Node-ID that is used to address the device in the network and to define it's priority of
EDS (Electronic Data Sheet)	An EDS file describes the communication properties of a device on the CAN network (baud rates, transmission types, I/O features, etc.). It is provided by the device manufacturer and is used in the configuration tool to configure a node (like a driver in an operating system).
PDO (Process Data Object)	CANopen frame containing I/O data. We distinguish between: Transmit-PDO (TPDO): data provided by a node Receive-PDO (RPDO): data to be consumed by a node The transmission direction is always seen from a node's point of view.
SDO (Service Data Object)	SDOs are typically used to read or write parameters while the application is running.
COB-ID (Communication Object Identifier)	Each CANopen frame starts with a COB-ID working as the Identifier. During the configuration phase, each node receives the COB-ID(s) for which it is the provider (or consumer).
NMT (Network Management Transition)	The NMT protocols are used to issue state machine change commands (i.e. to start and stop the devices), detect remote device boot ups and error conditions.

TILTIX MEMS AKS-3 INCLINOMETER WITH CANOPEN INTERFACE

7.1.1.1 Pre-Operational Mode

If the device is in this state, its configuration can be modified. However, only SDOs can be used to read or write device-related data. The device goes into Pre-Operational Mode:

- After the power up
- On receiving the Enter Pre-Operational NMT indication, if it was in Operational Mode before

If configuration is complete, the device goes into one of the following states on receiving the corresponding indication:

- "Stopped" on receiving the "Stop Remote Node" NMT indication
- "Operational" on receiving the "Start Remote Node" NMT indication

To set a node to pre-operational mode, the master must send the following message:

Identifier	Byte 0	Byte 1	Description
0 h	80 h	00	NMT-PreOp, All Nodes
0 h	80 h	NN	NMT-PreOp, NN

NN: Node Number

7.1.1.2 Operational Mode

The device goes into the "Operational" state if it was in the "Pre-Operational" state on receiving the "Start Remote Node" indication. If the CANopen network is started using the "Node Start" NMT services in "Operational" state, all device functionalities can be used. Communication can use PDOs or SDOs.

Note: Modifications to the configuration in "Operational" mode may have unexpected consequences and should therefore only be made in "Pre-Operational" mode.

To put one or all nodes in "Operational" mode, the master has to send the following message:

Identifier	Byte 0	Byte 1	Description
0h	01h	00h	NMT-Start, all nodes
0h	01h	NN (in hex)	NMT-Start, NN

NN: Node Number

TILTIX MEMS AKS-3 INCLINOMETER WITH CANOPEN INTERFACE

7.1.1.3 Stopped Mode

The device goes into the "Stopped" mode on receiving the "Node Stop" indication (NMT service) if it was in "Pre-Operational" or "Operational" mode. In this mode, the device cannot be configured. No service is available to read and write device-related

data (SDO). Only the slave monitoring function "Node Guarding" remains active. To put one or all nodes in the "Stopped" mode, the master has to send the following message:

Identifier	Byte 0	Byte 1	Description
0 h	02 h	00h	NMT-Stop, all nodes
0 h	02 h	NN (in hex)	NMT-Stop, NN

NN: Node Number

7.1.1.4 Re-Initialization of the Inclinator

If a node is not operating correctly, it is advisable to carry out a re-initialization. After re-initialization, the

inclinator accesses the bus in pre-operational mode.

Identifier	Byte 0	Byte 1	Description
0 h	82 h	00h	Reset Communication
0 h	81 h	NN (in hex)	Reset Node

Polled Mode	By a Remote Transmission Request Telegram, the connected host calls for the current process value. The inclinometer uses the current position value, calculates eventually set-parameters and sends back the obtained process value by the same identifier.
Cyclic Mode	The inclinometer transmits cyclically the current process value, without being called by the host. The cycle time can be programmed in milliseconds for values between 1 ms and 65536 ms.
Sync Mode	The inclinometer answers with current process value after receiving a sync telegram. The parameter sync counter can be programmed to skip a certain number of sync telegrams before answering again.
Heartbeat Function	A node signals its communication status by cyclically transmitting a heartbeat message. This message is received by one or any number of members (Heartbeat Consumers) in the bus and so they can control the dedicated node (Heartbeat Producer).

TILTIX MEMS AKS-3 INCLINOMETER WITH CANOPEN INTERFACE

7.1.1.5 Boot-up Procedure

The general boot-up procedure for the TILTIX is illustrated below:
CANopen and the mapping of various modes are

Number	Description
1	Module Power up
2	After initialization, the module automatically goes into pre-operational mode
3	NMT: Start Remote Node
4	NMT: Pre-operational Mode
5	NMT: Stop Remote Node
6	NMT: Reset Node
7	NMT: Reset Communication

7.1.1.6 Usage of Layer Settings Service (LSS)

The integrated Layer Setting Services (LSS) functionality is designed according to the CiA normative DS305V200 CANopen Layer Setting Services. These services and protocols can be used to enquire or to change settings of several parameters (of the physical, data link, and application layer) on a CANopen device with LSS slave capability by a CANopen device with LSS master capability via the CAN network. In case of TILTIX, the TILTIX inclinometer will be the LSS slave device and the PLC (control) has to support LSS master device functionality. The LSS-functionality of the TILTIX series is limited to the following parameters of the application layer,

namely node number and baud rate. The LSS master device requests services that are performed by the inclinometer (LSS slave devices). The LSS master device requests the LSS address from the LSS slave device. The LSS address is defined in object 1018h Identity Object; it consists of vendor-id, product-code, revision-number and serial-number as shown in the table below. After receiving this information the control can identify the inclinometer, the node-number and baud rate can then be set. The exact procedure varies in detail, dependent on the utilized PLC tool. This object provides the general identification of the inclinometer.

Subindex	Description	Data Type	Default Value
0	Number of entries	Unsigned 8	0x4
1	Vendor Id	Unsigned 32	0x42
2	Product Code	Unsigned 32	
3	Revision Number	Unsigned 32	0x00010600
4	Serial Number	Unsigned 32	–

1) Prone to change with every revision.

TILTIX MEMS AKS-3 INCLINOMETER WITH CANOPEN INTERFACE

7.1.2 Installation

7.1.2.1 Accessories

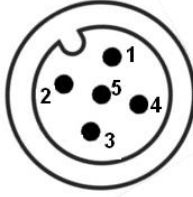
Article No	Article	Description
AKS	Inclinometer	AKS series of Inclinometers
Download	Datasheet ¹	TILTIX AKS Data Sheet, Specifications and Drawings
Download	User Manual ¹	Installation and Configuration User Manual (English)
Download	EDS-File ¹	Electronic Datasheet (EDS) File for Configuration
10017217	Connecting cable	2m PUR Cable with M12 5pin, A-Coded, female straight connector (other lengths available)
10017219	Connecting cable	2m PUR Cable with M12 5pin, A-Coded, female angled connector (other lengths available)
10005631	Termination Res	External terminal resistors for higher baud rate transmissions

1) The latest documentation and the EDS file can also be downloaded from our [website](#).

7.1.2.2 Pin Assignment

The inclinometer is connected via a 5-pin round sensor, Female at connector counterpart or M12 connector. (Standard M12, Male side at connection cable).

TILTIX MEMS AKS-3 INCLINOMETER WITH CANOPEN INTERFACE

Signal	5 pin round connector	Pin Assignment
CAN Ground	1	
VS Supply Voltage	2	
0 V Supply Voltage	3	
CAN High	4	
CAN Low	5	

TILTIX MEMS AKS-3 INCLINOMETER WITH CANOPEN INTERFACE

7.1.2.3 Installation Precautions



Warning: Do not remove or mount while the inclinometer is under power!



Avert any modifications to the housing!



Avoid mechanical load!

Prior to installation, please check for all connections and mounting instructions to be complied with. Please also observe the general rules and regulations on operating low voltage technical devices, for safety and sustainability of TILTIX InclInometers over long period of time.

Please read the installation leaflet for detailed instructions and precautions during mounting and installation.

7.1.2.4 Mounting Instructions

TILTIX is a pre-calibrated device which can be put into immediate operation, upon simple and easy installation with a four point mount. The mounting surface must be plane and free of dust and grease. We recommend hex-head screws with M6 or UNCbolts $\frac{1}{4}$ for the best possible and secure mounting.

Use all four screws for mounting but restrict the tightening torque in the range of 1.5 – 2.5 Nm for the screws. The M12 connectors are to be perfectly

aligned and screwed till the end with a tightening torque in the range of 0.4 – 0.6 Nm. Use all four screws for mounting and also note to use the same tightening torque for all the screws.

Prior to installation, please check for all connection and mounting instructions to be complied with. Please do also observe the general rules and regulations on low voltage technical devices.

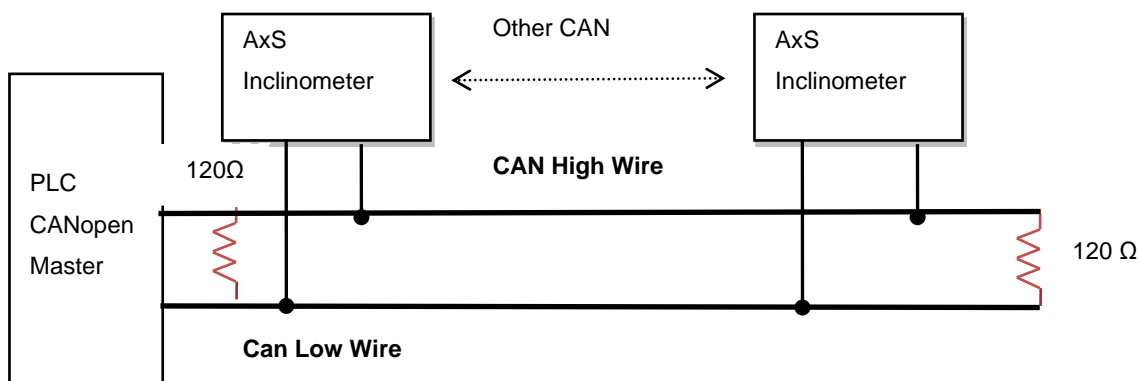
TILTIX MEMS AKS-3 INCLINOMETER WITH CANOPEN INTERFACE

7.1.2.5 Bus Termination

If the inclinometer is connected at the end or beginning of the bus or is used at transmission ≥ 50 kBaud a termination resistor of 120 Ohm must be used in order to prevent reflection of information back into the CAN bus. TILTIX sensors have built-in termination resistors that can be activated (1) or deactivated (0) if required by setting object 3002h accordingly. Please refer to the Appendix A to learn more about the objects.

The bus wires can be routed in parallel or twisted, with or without shielding in accordance with the electromagnetic compatibility requirements. A single line structure minimizes reflection.

The following diagram shows the components for the physical layer of a two-wire CAN bus:



TILTIX MEMS AKS-3 INCLINOMETER WITH CANOPEN INTERFACE

7.1.2.6 LED Definition

Status LED (Dual colored) Green / Red LED	Meaning
Green off	No power supply
Green single flash	Device in CAN state STOPPED.
Green blinking	Boot Up message sent, device configuration is possible Device in CAN state PRE-OPERATIONAL
Green on	Normal operation mode, Encoder in CAN state OPERATIONAL
Red off	Normal operation mode
Red single flash	At least one of the error counters of the CAN controller has reached or exceeded the warning level (too many error frames)
Red double flash	A guard event or heartbeat event has occurred
Red blinking	General configuration error (e.g. wrong baud rate)
Red on	The can controller is in state bus off. No communication is possible anymore. Too many error frames in the network.

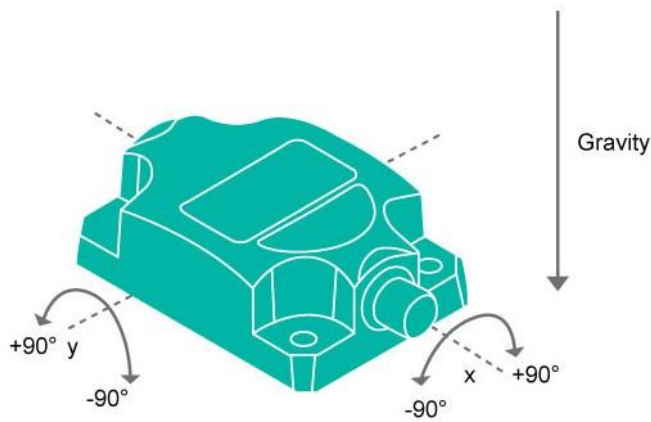
Since a dual color LED is used, only the red LED is shown in cases where both green and red LED would light up.

TILTIX MEMS AKS-3 INCLINOMETER WITH CANOPEN INTERFACE

7.1.2.7 Measurement Axes and Orientation

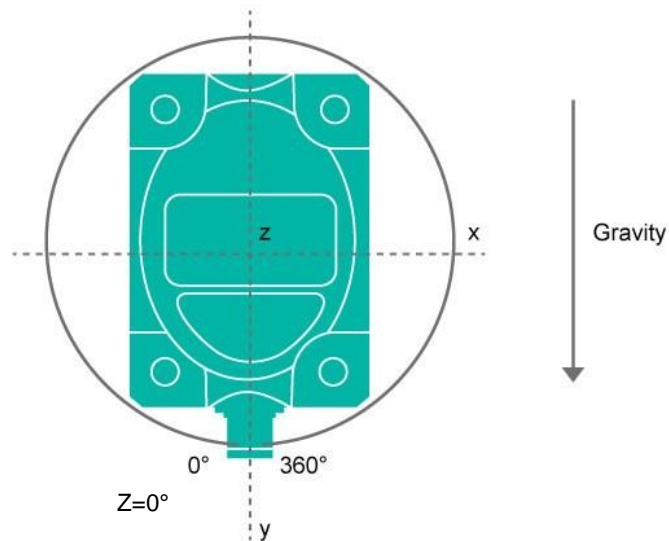
TILTIX ACS -090-2 – Dual Axis Inclinator

X- and Y-Axis measure the angle position in space. Both axes are limited to $\pm 90^\circ$. The sensor is mounted horizontally. The X- and Y-Axis output 0° , when the inclinometer is flat.



TILTIX ACS -360-1 – Single Axis Inclinator

The sensor is mounted vertically. A clockwise rotation increases the angle value from 0° - 360° . When the male connector is pointing downwards, the output is 0° .



TILTIX MEMS AKS-3 INCLINOMETER WITH CANOPEN INTERFACE

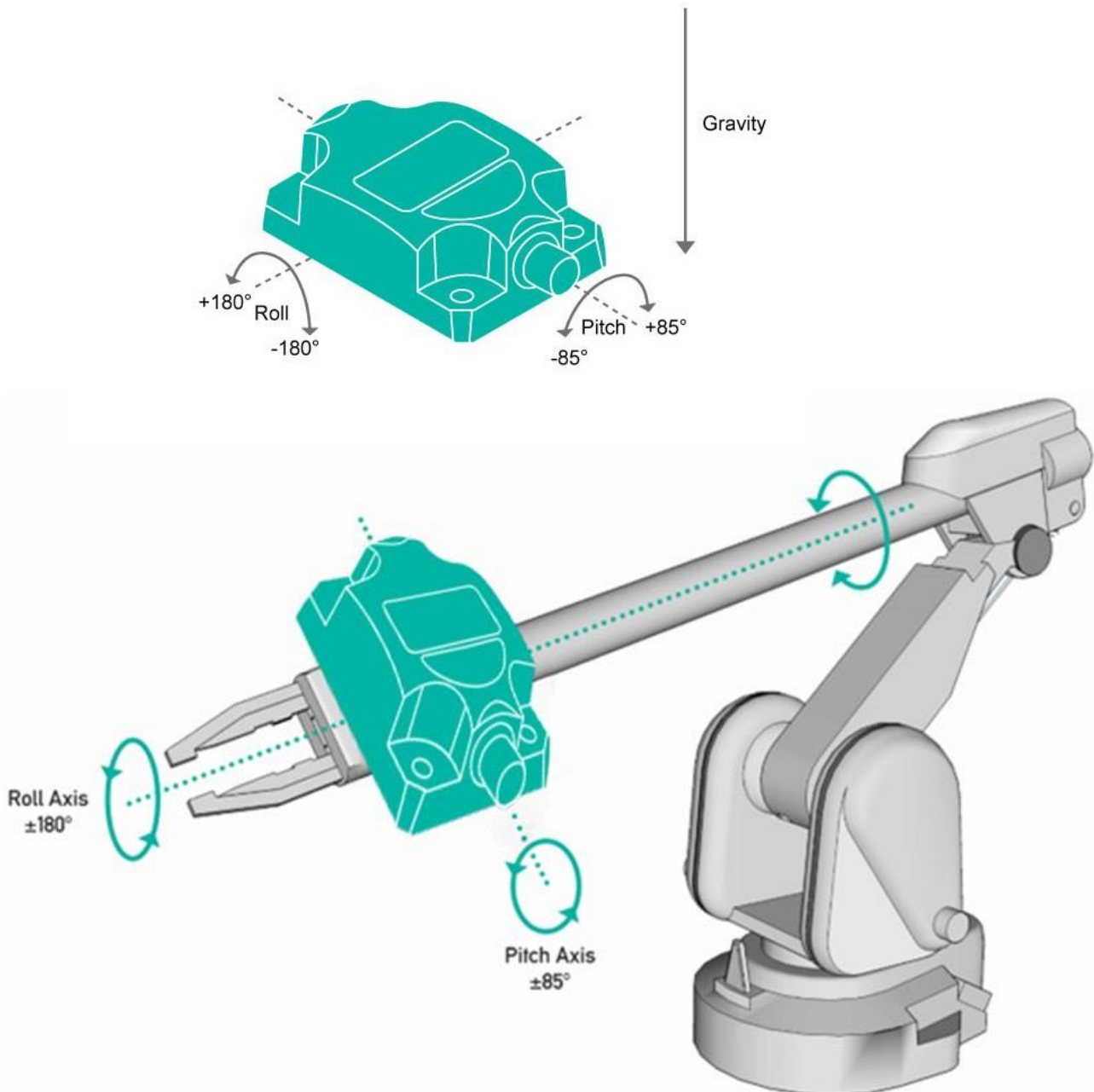
TILTIX ACS -180-E – Pitch and Roll Axis Inclinometer

The Pitch axis monitors the position angle in space, while the Roll axis shows the rotation with respect to the pitch angle.

In case of a robot arm (graphic below), the pitch axis monitors the position angle in space and the roll axis measures the rotation of the robot head around the arm (just like a Singleturn encoder).

The Pitch and Roll version is very usefull for any machine where a part of the application is rotating around another segment.

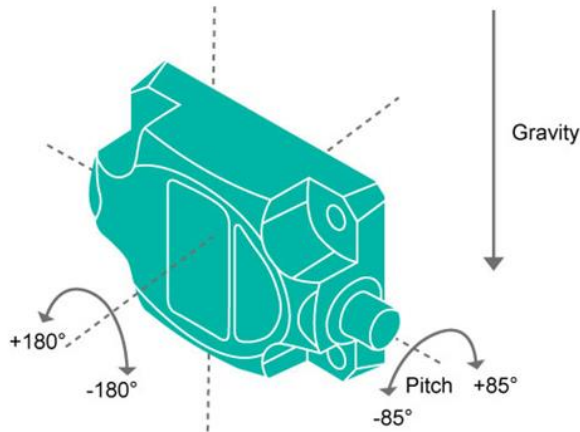
The Pitch axis is limited to $\pm 85^\circ$, while the Roll axis is limited to $\pm 180^\circ$.



TILTIX MEMS AKS-3 INCLINOMETER WITH CANOPEN INTERFACE

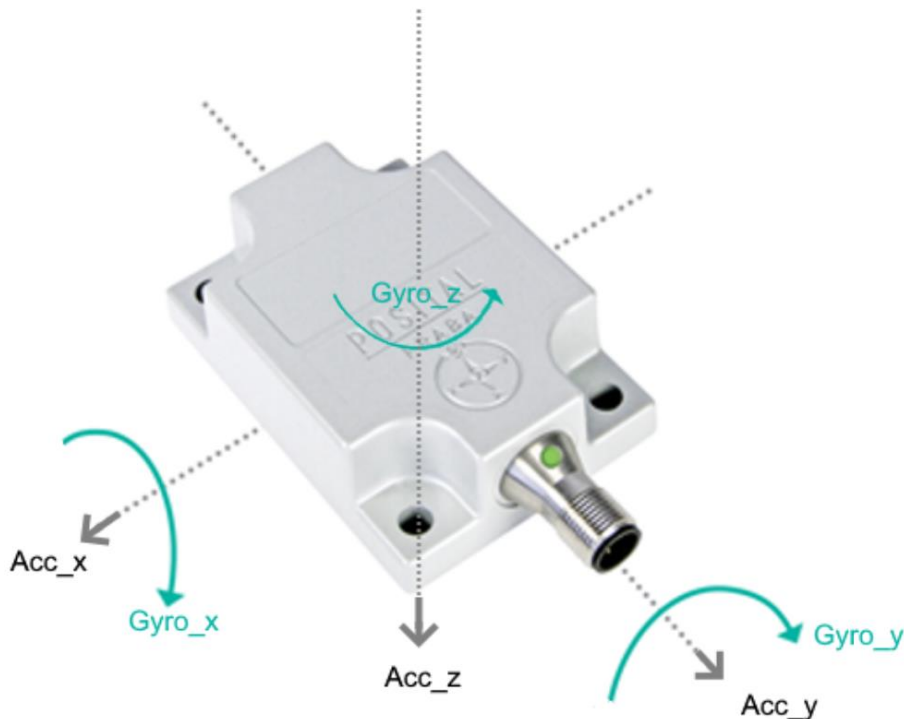
TILTIX ACS-180-F – Pitch and Roll Axis inclinometer

This version is intended for vertical mounting. Like the ACS-180-E, the Pitch axis monitors the position angle in space, while the Roll axis shows the rotation with respect to the pitch angle.



7.1.2.8 Orientation and Direction of Accelerometer and Angular Rate

The axis orientation and direction can be derived from the image below. The direction is independent of the angle configuration and measuring range and is therefore the same for all inclinometer versions.



TILTIX MEMS AKS-3 INCLINOMETER WITH CANOPEN INTERFACE

8 TILTIX Software Configuration

This chapter succeeds the hardware configuration as in real time. TILTIX is a very flexible device and hence all the parameters are programmable via CAN bus. This enables remote configuration.

This chapter is divided into two major parts - one describing the methodology for putting the TILTIX into operation and the other for PDO/SDO programming of TILTIX.

8.1.1.1 Default Factory Settings

Description	Object	Value
Device Type	1000h	0x4019A – dual axis AxS-xxx-x-CA03 0x3019A – single axis AxS-xxx-x-CA03 0x2019A – dual axis AxS-xxx-x-CA01 0x1019A – single axis AxS-xxx-x-CA01
Cyclic Timer	2200h	00h (0 ms)
Resolution	6000h	0Ah (0.01°)
Node Number	3000h	01h (Node number: 1)
Baud Rate	3001h	03h (125 kB)

Note: The factory settings can be restored at any time. Few of the parameters have to be re-programmed in order to make the TILTIX

inclinometers compatible with the controller or the already existing CAN bus to which it is going to be installed on.

8.1.1.2 Active Programming Objects

Active CANopen objects depending on the state of TILTIX: The crosses in the table below indicate

which CANopen objects are active in each state.

Initialization	Pre-Operational	Operational	Stopped	
PDO Object			x	
SDO Object		x	x	
Boot-Up	x		x	
NMT		x	x	x

TILTIX MEMS AKS-3 INCLINOMETER WITH CANOPEN INTERFACE

8.1.1.3 Programmable Parameters

Objects are based on the CiA-DS410 CANopen profile for inclinometer (www.can-cia.org). The following table gives a list of the command identifiers sent and received by the inclinometer. These are the standard commands used for

communication and transmission between a master and slave in a CAN bus. It is quite useful for the analysis of communication logs between the master and slave and for better understanding of the system under observation.

8.1.1.4 Command Description

Command	Function	Telegram	Description
22h	Domain Download	Request	Parameter to TILTIX
60h	Domain Download	Confirmation	Parameter Received
40h	Domain Upload	Request	Parameter Request
43h, 4Bh, 4Fh 1	Domain Upload	Reply	Parameter to Master
80 h	Warning	Reply	Transmission Error

1) The value of the command byte depends on the data length of the called parameter.

8.1.1.5 Data Length of Commands

Command	Data length	Data Length
43h	4 Byte	Unsigned 32
4Bh	2 Byte	Unsigned 16
4Fh	1 Byte	Unsigned 8

TILTIX MEMS AKS-3 INCLINOMETER WITH CANOPEN INTERFACE

8.1.1.6 Frequently Used Commands

The following list shows the most frequently used objects while programming the TILTIX inclinometer. The whole list of objects is provided in Appendix A.

Section 6 offers important programming tips and FAQ which are necessary for the proper use of the inclinometer.

Position Value (Objects 6010h, 6020h)	<p>The objects 6010h and 6020h are used to get the scaled and acceleration compensated tilt angle (integer 16 variables)</p> <p>For dual axis AKS-090-2: Object 6010h refers to the X-Axis Object 6020h refers to the Y-Axis</p> <p>For one axis AKS-360-1: Object 6010h refers to the Z-Axis</p> <p>For pitch and roll axis AKS-180-E and AKS-180-F: Object 6010h refers to the Pitch-Axis Object 6020h refers to the Roll-Axis</p>
Store Parameters (Objects 1010h, 2300h)	Object 1010h is used to store either all parameters or only parts of the object dictionary if necessary. Whereas object 2300h stores and saves all current parameters with an additional NMT reset of the TILTIX.
Resolution in Degree (°) (Object 6000h)	This parameter is used to program the desired resolution. The resolution can be set to 1° (1000d), 0.1° (100d) or 0.01° (10d). (Default 10d – 0.01°)
Preset Value (Objects 6012h/6022h)	<p>You set the inclinometers output position value to a desired position value in your machine. The value is set in the inclinometer, when the telegram is sent and confirmed. Do this operation during standstill of the application to increase the accuracy, because the device is calculating and automatically applying an offset value. If you set the preset dynamically, which is not recommended, then you also have to take bus latency time and inclinometer internal cycle time into consideration.</p> <p>For 2 axes: Object 6012h is used for setting the preset value for X-Axis and Object 6013h for Y-Axis.</p> <p>For 1 axis Object 6012h is used for Z-Axis.</p>
Baud Rate (Object 3001h)	The Baud rate can be programmed via SDO. (Default 125 kBaud)
Node Number (Object 3000h)	The setting of the Node Number can be achieved via SDO-Object. Valid addresses range from 1 to 127, each address can only be used once.

TILTIX MEMS AKS-3 INCLINOMETER WITH CANOPEN INTERFACE

8.1.1.7 PDO Transmission

Process Data Objects (PDOs) communicate process information/data and enable them to be exchanged in real time. A CANopen device's PDO set describes the implicit exchanges between this device and its communication partners on the network. The exchange of PDOs is only authorized if the device is in "Operational" mode.

Note: The PDOs can be directly mapped into memory locations on the controller and can be viewed upon reading those memory locations. An example of a SCHNEIDER-TWIDO controller is provided in the next section.

8.1.1.8 Object 1800h: 1st Transmit PDO Communication Parameter

This object contains the communication parameter of the 1st transmit PDO.

Subindex1	Description	Data Type	Default Value	Access	Restore after BootUp
00h	Number of sub indices	Unsigned 8	5	ro	yes
01h	COB-ID	Unsigned 32	180h + Node ID	rw	yes
02h	Transmission Mode	Unsigned 8	1	rw	yes
03h	Inhibit Time	Unsigned 32	0	rw	yes
04h	Not Available				
05h	Event Timer	Unsigned 32	0	rw	yes

1) Subindex: Second degree identifier used in combination with the object. (Follows the object number)

Programming example #1 Transmission Type (for NN=1)

The inclinometer should send the PDO every 100 ms (default setting is that the sensor answers to synch messages from the CANopen master)

Step 1: Set all sensors to pre-operational mode

Identifier	DLC	Byte 0	Byte 1
00	2	80	00

Step 2: Set Event timer 1800Sub05 to 100ms (100dec = 64h)

Identifier	DLC	Command	Index	Subindex	Service/Process data			
NN = 1		Download			Byte 4	Byte 5	Byte 6	Byte 7
601	8	22	00 18	05	64	00	00	00

TILTIX MEMS AKS-3 INCLINOMETER WITH CANOPEN INTERFACE

Step 3: Set Transmission Type (1800Sub2) to "Send PDO on event" (256dec = FEh)

Identifier	DLC	Command	Index		Subindex	Service/Process data			
NN = 1		Download				Byte 4	Byte 5	Byte 6	Byte 7
601	8	22	00	18	02	FE	00	00	00

Step 4: Set all sensors to operational mode

Identifier	DLC	Byte 0	Byte 1
00	2	01	00

8.1.1.9 Object 1801h: 2nd Transmit PDO Communication Parameter

This object contains the communication parameter of the 2nd transmit PDO.

Subindex1	Description	Data Type	Default Value	Access	Restore after BootUp
00h	Number of sub indices	Unsigned 8	5	ro	yes
01h	COB-ID	Unsigned 3 2	280h + Node ID	rw	yes
02h	Transmission Mode	Unsigned 8	1	rw	yes
03h	Inhibit Time	Unsigned 32	0	rw	yes
04h	Not Available				
05h	Event Timer	Unsigned 32	0	rw	yes

1) Subindex: Second degree identifier used in combination with the object. (Follows the object number)

TILTIX MEMS AKS-3 INCLINOMETER WITH CANOPEN INTERFACE

8.2 Object 1802h: 3rd Transmit PDO Communication Parameter

This object contains the communication parameter of the 3rd transmit PDO. This TPDO is deactivated by default. To activate this, the default COB-ID of 8000 0380h needs to be adjusted to 0000 0380h. This object is only available for AxS-xxx-x-**CA03** versions

Subindex1	Description	Data Type	Default Value	Access	Restore after BootUp
00h	Number of sub indices	Unsigned 8	5	ro	yes
01h	COB-ID	Unsigned 32	8000 0380h + Node ID	rw	yes
02h	Transmission Mode	Unsigned 8	1	rw	yes
03h	Inhibit Time	Unsigned 32	0	rw	yes
04h	Not Available				
05h	Event Timer	Unsigned 32	0	rw	yes

2) Subindex: Second degree identifier used in combination with the object. (Follows the object number)

8.3 Object 1803h: 4th Transmit PDO Communication Parameter

This object contains the communication parameter of the 4th transmit PDO. This TPDO is deactivated by default. To activate this, the default COB-ID of 8000 0480h needs to be adjusted to 0000 0380h. This object is only available for AxS-xxx-x-**CA03** versions

Subindex1	Description	Data Type	Default Value	Access	Restore after BootUp
00h	Number of sub indices	Unsigned 8	5	ro	yes
01h	COB-ID	Unsigned 32	8000 0480h + Node ID	rw	yes
02h	Transmission Mode	Unsigned 8	1	rw	yes
03h	Inhibit Time	Unsigned 32	0	rw	yes
04h	Not Available				
05h	Event Timer	Unsigned 32	0	rw	yes

3) Subindex: Second degree identifier used in combination with the object. (Follows the object number)

TILTIX MEMS AKS-3 INCLINOMETER WITH CANOPEN INTERFACE

8.3.1.1 Transmission Mode

The transmission mode (Sub index 2) for Objects 1800 and 1801 can be configured as described below:

Transfer Value (Dec)	Transmission Mode					Note
	Cyclic	Acyclic	Synchronous	Asynchronous	RTR Only	
0		X	X			Send PDO on first sync message following an event
1 – 240	X		X			Send PDO every x sync messages
241 – 251	Reserved					
252			X		X	Receive Sync and send PDO on remote request
253					X	Update data and send PDO on remote request
254				X		Send PDO on event
255				X		Send PDO on Event

8.3.1.2 Inhibit Time

The inhibit time is the minimum interval for PDO transmission if the transmission type is set to 254d (FEh) and 255d (FFh). The value is defined as

multiple of 100 μ s. The Inhibit Time cannot be changed while the respective PDO is in operation.

8.3.1.3 Event Timer

The Event Timer only works in asynchronous transmission mode (transmission mode 254d and 255d). The value is defined as multiple of 1 ms. A

transmit PDO is sent after the Event Timer expires (for values > 0). The range is 1 – 65536 ms.

TILTIX MEMS AKS-3 INCLINOMETER WITH CANOPEN INTERFACE

8.3.1.4 Object 1A00h: 1st Transmit PDO Mapping Parameter

This object contains the mapping parameter of the 1st transmit PDO.

Subindex	Description	Data Type	Default Value	Access	Restore after BootUp
0	Number of sub indices	Unsigned 8	2 – dual axis 1 – single axis	rw	yes
1	Mapped object	signed 16 for dual axis unsigned 16 for single axis	0x60100010	rw	yes
2	Mapped object	signed 16	0x60200010	rw	yes
3	Mapped object	Unsigned 16	0	Rw	Yes
4	Mapped object	Unsigned 16	0	rw	yes

8.3.1.5 Object 1A01h: 2nd Transmit PDO Mapping Parameter

This object contains the mapping parameter of the 2nd transmit PDO.

Subindex	Description	Data Type	Default Value	Access	Restore after BootUp
0	Number of sub indices	Unsigned 8	2 – dual axis 1 – single axis	rw	yes
1	Mapped object	signed 32	0x61100020	rw	yes
2	Mapped object	signed 32	0x61200020	rw	yes
3	Mapped object	Unsigned 16	0	Rw	Yes
4	Mapped object	Unsigned 16	0	rw	yes

Programming example #2 Change TPDO (for NN=1):

The Sensor should transmit the following values in the 2nd TPDO

TILTIX MEMS AKS-3 INCLINOMETER WITH CANOPEN INTERFACE

TPDO2

Acceleration x	Acceleration y	Gyro x	Gyro y
----------------	----------------	--------	--------

Step 1: Disable 2nd Transmit PDO

Identifier	DLC	Command	Index		Subindex	Service/Process data			
NN = 1		Download				Byte 4	Byte 5	Byte 6	Byte 7
601	8	22	01	18	01	00	00	00	80

Step 2: Disable TPDO2 mapping

Identifier	DLC	Command	Index		Subindex	Service/Process data			
NN = 1		Download				Byte 4	Byte 5	Byte 6	Byte 7
601	8	22	01	1A	00	00	00	00	00

Step 3: Map acceleration x 16-bit value (3403Sub0) to TPDO2 Object 1

Identifier	DLC	Command	Index		Subindex	Service/Process data			
NN = 1		Download				Byte 4	Byte 5	Byte 6	Byte 7
601	8	22	01	1A	01	10	00	03	34

Step 4: Map acceleration y 16-bit value (3404Sub0) to TPDO2 Object 2

Identifier	DLC	Command	Index		Subindex	Service/Process data			
NN = 1		Download				Byte 4	Byte 5	Byte 6	Byte 7
601	8	22	01	1A	02	10	00	04	34

Step 5: Map gyro x 16-bit value (3400Sub0) to TPDO2 Object 3

Identifier	DLC	Command	Index		Subindex	Service/Process data			
NN = 1		Download				Byte 4	Byte 5	Byte 6	Byte 7
601	8	22	01	1A	03	10	00	00	34

Step 6: Map gyro y 16-bit value (3401Sub0) to TPDO2 Object 4

Identifier	DLC	Command	Index		Subindex	Service/Process data			
NN = 1		Download				Byte 4	Byte 5	Byte 6	Byte 7
601	8	22	01	1A	04	10	00	01	34

Step 7: Enable TPDO mapping Parameter again

Identifier	DLC	Command	Index		Subindex	Service/Process data			
NN = 1		Download				Byte 4	Byte 5	Byte 6	Byte 7
601	8	22	01	1A	00	04	00	00	00

TILTIX MEMS AKS-3 INCLINOMETER WITH CANOPEN INTERFACE

Step 8: Enable 2nd Transmit PDO

Byte 4 to Byte 5 is the COB-ID -> 280h + Node-ID = 281h. For TPDO 1 this would be 180h + Node-ID

Identifier	DLC	Command	Index		Subindex	Service/Process data			
NN = 1		Download				Byte 4	Byte 5	Byte 6	Byte 7
601	8	22	01	18	01	81	02	00	00

Step 9: Save this configuration by writing "save" to 1010Sub01

Identifier	DLC	Command	Index		Subindex	Service/Process data			
NN = 1		Download				Byte 4	Byte 5	Byte 6	Byte 7
601	8	22	10	10	01	73	61	76	65

8.4 Object 1A01h: 3rd Transmit PDO Mapping Parameter

This object contains the mapping parameter of the 2nd transmit PDO. This object is only available for AxS-xxx-x-CA03 versions

Subindex	Description	Data Type	Default Value	Access	Restore after BootUp
0	Number of sub indices	Unsigned 8	2 – dual axis 1 – single axis	rw	yes
1	Mapped object	Unsigned 16	0x60100010	rw	yes
2	Mapped object	Unsigned 16	0x60200010	rw	yes
3	Mapped object	Unsigned 16	0	Rw	Yes
4	Mapped object	Unsigned 16	0	rw	yes

8.5 Object 1A01h: 4th Transmit PDO Mapping Parameter

This object contains the mapping parameter of the 2nd transmit PDO. This object is only available for AxS-xxx-x-CA03 versions

Subindex	Description	Data Type	Default Value	Access	Restore after BootUp
0	Number of sub indices	Unsigned 8	2 – dual axis 1 – single axis	rw	yes
1	Mapped object	Unsigned 16	0x60100010	rw	yes
2	Mapped object	Unsigned 16	0x60200010	rw	yes
3	Mapped object	Unsigned 16	0	Rw	Yes
4	Mapped object	Unsigned 16	0	rw	yes

TILTIX MEMS AKS-3 INCLINOMETER WITH CANOPEN INTERFACE

8.5.1.1 Types of SDO

Service Data Objects (SDOs) allow a device's data to be accessed by using explicit requests. The SDO service is available if the device is in the "Operational" or "Pre-Operational" state. There are two types of SDOs:

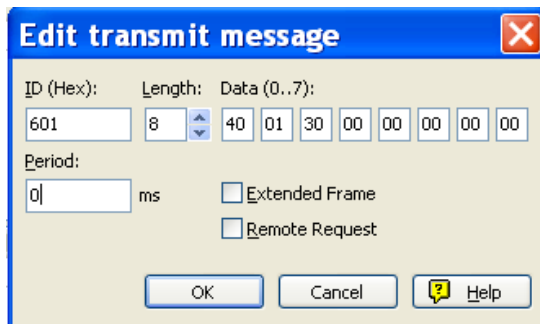
- Read SDOs (Download SDOs)
- Write SDOs (Upload SDOs).

The SDO protocol is based on a 'Client/Server' model:

Download SDO	The client sends a request indicating the object to be read. The server returns the data contained within the object.
Upload SDO	The client sends a request indicating the object to be written to with the desired value. After the object has been updated, the server returns a confirmation message.
Unprocessed SDO	The server returns an error code (80) in both cases if an SDO could not be processed.

TILTIX MEMS AKS-3 INCLINOMETER WITH CANOPEN INTERFACE

A typical illustration of an SDO for explicitly reading the current baud rate value is given below:

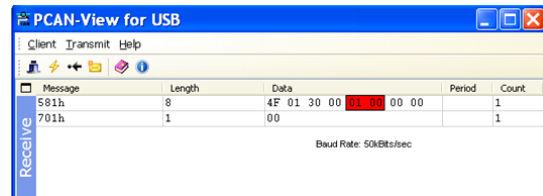


SDO passed as a new message to the device

We used a PEAK™ CAN master for this illustration. The PCAN®-USB adapter enables simple connection to CAN networks.

The PCAN®-USB's compact plastic casing makes it suitable for mobile applications. It works as a master on the CAN bus connection via D-Sub, 9-pin and is in accordance with CiA102 standards. (To learn more about Peak CAN click [here](#))

- ID: 601- Message to NN1 (600+1)
- Length: 8bit word
- Data 0: Read (40) / Write (22)
- Object 3001h allows to read the baud rate value from the inclinometer.
- Data 1 & 2 : Object in Little Endian (3001s is 0130 in Little Endian format)
- Data 3: Sub-Index (NA)
- Data 4-7: Data to be written (NA in read command)
- The Received message 581h
- reads out the data



Received Message from the Device

So, SDOs can be used to explicitly read or write data in TILTIX CANopen inclinometers. All the relevant objects that can be configured are described in Appendix A.

In the above example, 701h is the boot up message received. Then once we transmit the SDO command as shown above, we receive a reply. The received message 581h, consists of the domain downloaded. In this case it is the baud rate (01h – 50 kB) as indicated in the above figure.

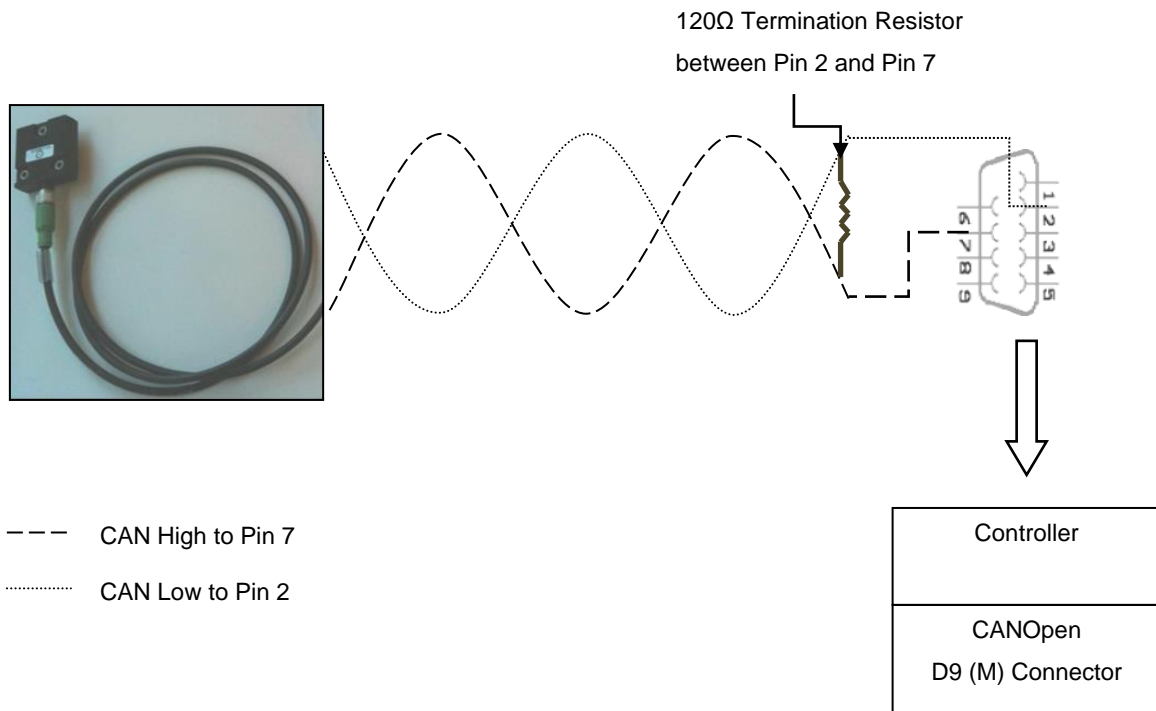
TILTIX MEMS AKS-3 INCLINOMETER WITH CANOPEN INTERFACE

8.5.2 Working with Schneider PLC

8.5.2.1 Types of SDO

A single axis inclinometer was connected to a TWIDO programmable logic controller with a CANopen communication interface. The step-by-step connection procedure and the working of the inclinometer in a CAN bus is illustrated in the following sections. Please note that, the

programming in other control systems may vary individually. Please have this section as a reference for TILTIX' working with programmable logic controllers.



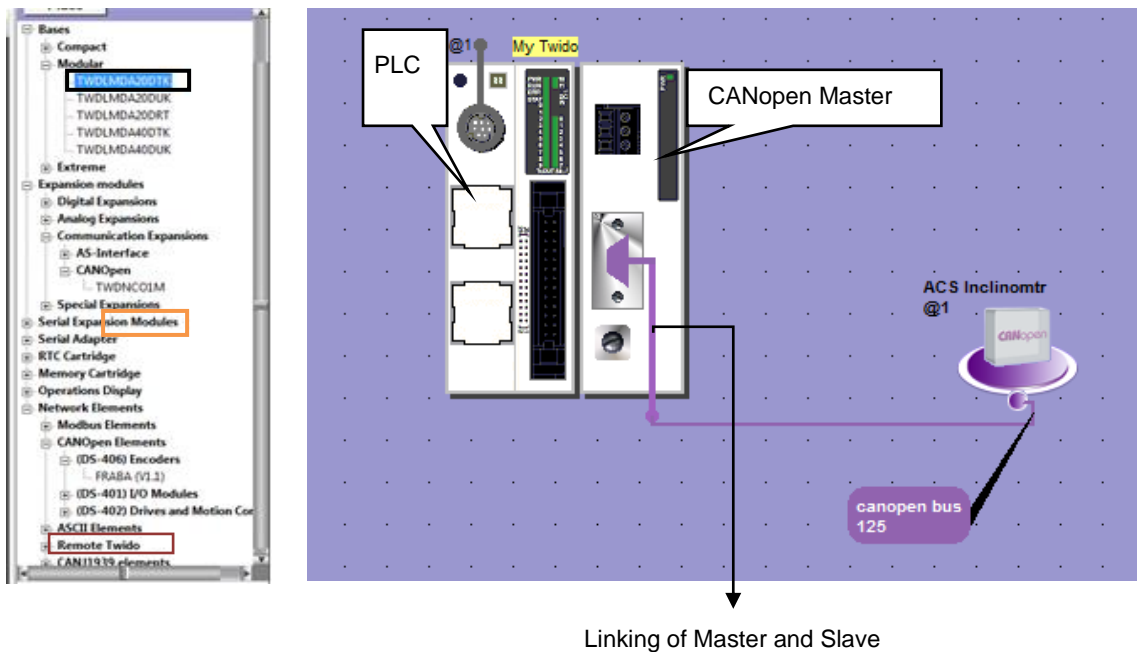
TILTIX MEMS AKS-3 INCLINOMETER WITH CANOPEN INTERFACE

identifies the PDOs and maps them on to the slave device.

8.5.2.6 Connection Network Setup

The illustration below, describes the connection of the elements in the CAN bus. At first, the CANopen communication interface is connected to the main

controller. Then the inclinometer is connected to the CANopen communication interface.



The next step after the setup of the network is the configuration of all the parameters and settings, to facilitate the communication between the master, slave and the controller. This picture is the overall

description of the setup, with the TWIDO TWDLMDA20DTK controller, TWDNCO1M CANopen communication expansion module and the TILTIX360 EDS file.

TILTIX MEMS AKS-3 INCLINOMETER WITH CANOPEN INTERFACE

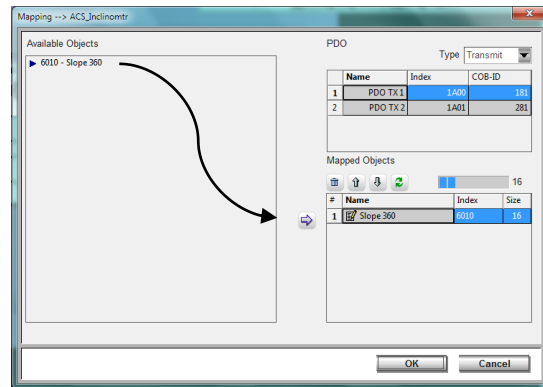
8.5.3 Configuration

8.5.3.1 TILTIX Process Data Objects (PDO)

Mapping

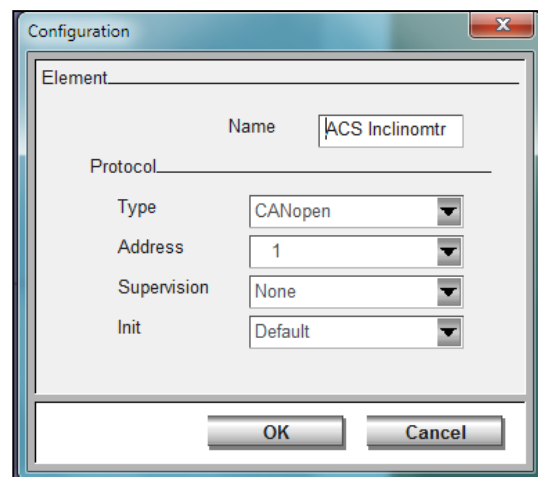
A list of all available objects is pre-programmed in the EDS file. Select the TILTIX inclinometer on the bus and click on Configuration. A list of all the mapped PDOs appears.

Then, according to need, the objects are mapped on to the Transmit-PDO's of the TILTIX.



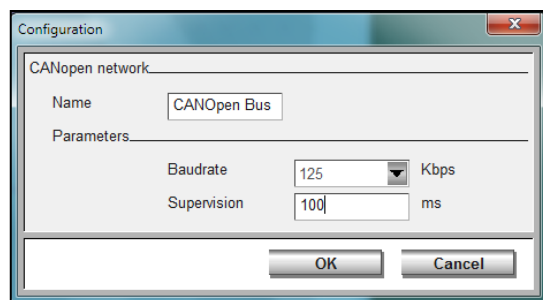
8.5.3.2 TILTIX CANopen Node Configuration

Click on the TILTIX inclinometer on the bus and select the CANopen configuration option. It is used to define the name, type, address and supervision of the node. Make sure the node number and the address coincide for the inclinometer selected.



8.5.3.3 CANopen bus network configuration

Click on the bus connecting the TILTIX inclinometer and the PLC. Select the bus configuration option to define the name of the bus, the transmission speed and supervision time. Make sure that the TILTIX is configured with the appropriate baud. (All devices on the bus must have the same baud rate)

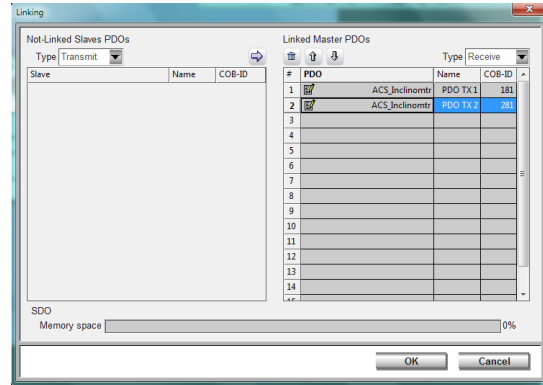


TILTIX MEMS AKS-3 INCLINOMETER WITH CANOPEN INTERFACE

8.5.3.4 Linking of CANOpen Master and TILTIX

Transmit-PDOs

Select the CANopen link on the controller. Click on the configuration option. The PDOs of the slave are mapped on to the CANOpen master so that the information contained in the objects of the slave are transmitted and saved on to the controller's memory



8.5.3.5

TILTIX & Controller Memory Configuration

The current and updated position values from the TILTIX encoder are mapped on to an EEPROM memory location in the controller. This memory location, in this case %IWC1.0.0 and %IWC1.1.0

will always contain the slope values obtained from the object 6010h of the TILTIX when the controller is online.





Description of the module		Reference number	TWDNCO1M		Address	1	
		Description	CANopen bus master module.				

Module configuration.					
#	Slave	Type	Supervision	Init	
1	ACS_Inclinomtr	FRABA (V1.1)	None	Default	




Used	Address	Symbol	Object	Size
<input type="checkbox"/>	%IWC1.0.0	SLOPE	Slope 360	16
<input type="checkbox"/>	%IWC1.1.0	SLOPE_DUPLICATE	Slope 360	16

8.5.3.6 Debugging

The debugging stage is done on completing the configuration of the PDO's. It involves the following steps:

ACS360

Connection for debugging

This connection mode allows you to directly connect to a controller or to transfer an application between the PC and a controller

Select a Connection

Type	Name	Connection mode	IP address/Number
Pc	COM9	Serial	COM9.Punit

The communication has been established.

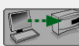
Test the connection

The TwidoSuite and the PLC applications are different.
immediate connection impossible
Hardware configurations are compatible:
PC ==> PLC Transfer is possible
PLC application is not protected:
PLC ==> PC transfer is authorized


Comparison of applications

	Project	Controller
Application Name	My Twido	My Twido
Type of base	TWDLMDA20DTK	TWDLMDA20D-K

Choose a type of exchange



Transfer
PC ==> controller



Transfer
controller ==> PC

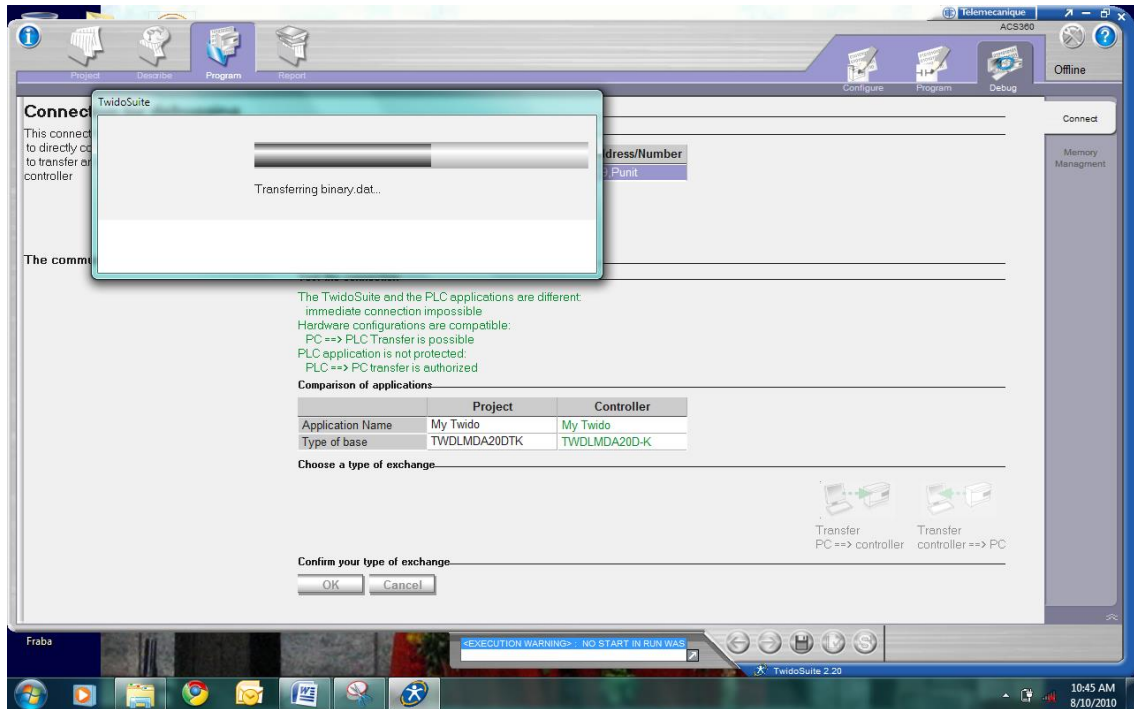
Confirm your type of exchange

OK
Cancel

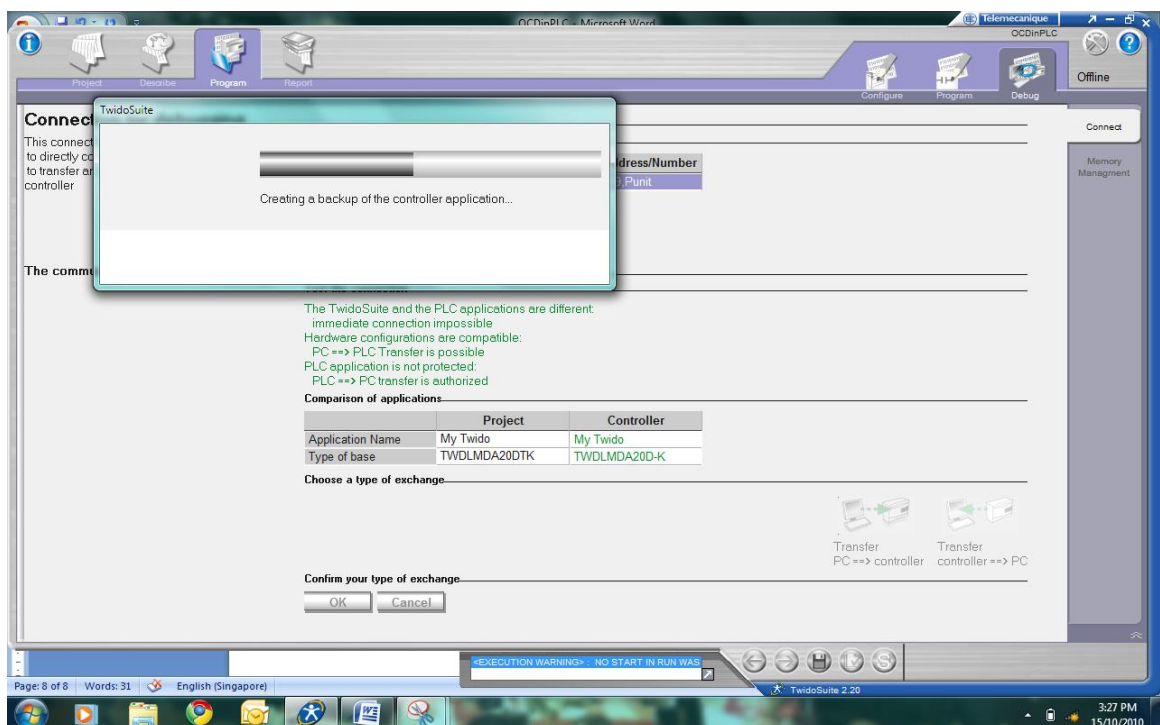
TILTIX MEMS AKS-3 INCLINOMETER WITH CANOPEN INTERFACE

The serial communication port is selected and PC → controller transfer is initiated. Once the transfer is initiated the configured parameters and the programming done on the PC is debugged and

transferred to the controller for real time application. The following illustrations are the intermediate tasks during debugging.



Converting all the configured parameters to binary formats.



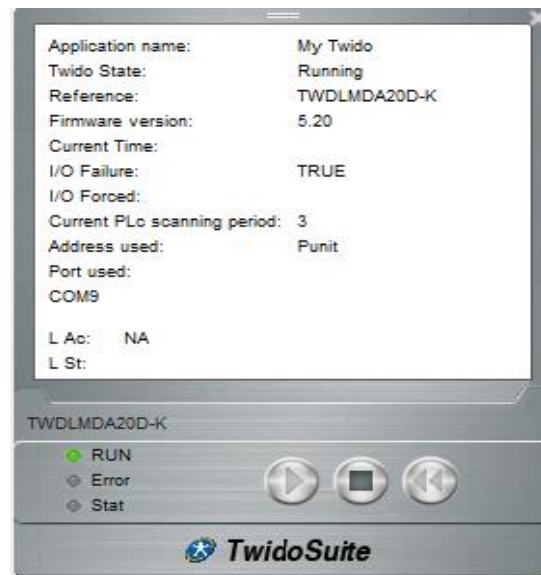
TILTIX MEMS AKS-3 INCLINOMETER WITH CANOPEN INTERFACE

Once the controller goes into the online mode, the PDOs cannot be changed. However, SDOs still can be configured if necessary.

8.5.3.7 Run

Once debugged, the controller goes into online mode. SDOs then can be configured if needed before running the controller.

Upon start up, we can create an animation table to monitor the necessary controller parameters and the system variables which contain the position value. Now, we will program the PLC in order to obtain the position values.



8.5.3.8 Resetting CANOpen Communication

0 *	LD 1
1 1/*	[%MW0 := 16#0001]
2 0/*	[%MW1 := 16#0000]
3 1	LD %SW81:X3
4 * /*	[CAN_CMD1 %MW0:2]
5 0	LDN %SW81:X4

8.5.3.9 Resetting CANOpen Nodes

0 *	LD 1
1 1/*	[%MW0 := 16#0001]
2 1/*	[%MW1 := 16#0001]
3 1	LD %SW81:X3
4 * /*	[CAN_CMD1 %MW0:2]
5 0	LDN %SW81:X4

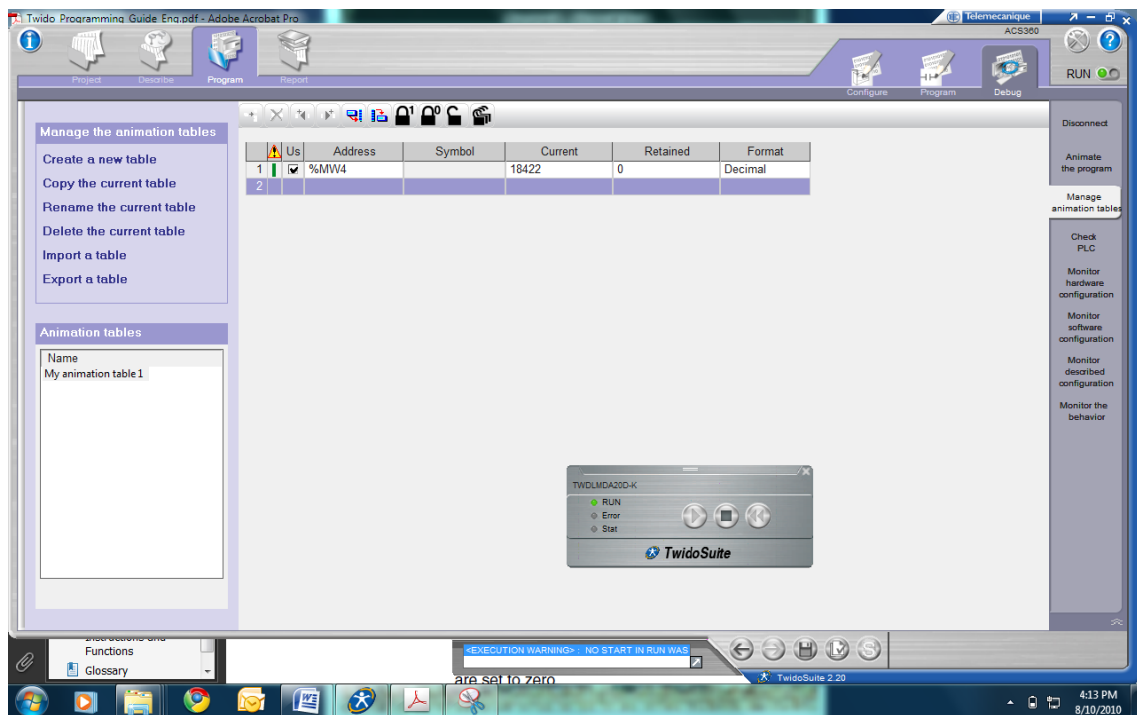
0 *	LD 1
1 2/*	[%MW0 := 16#0002]
2 1/*	[%MW1 := 16#0001]
3 1	LD %SW81:X3
4 * /*	[CAN_CMD1 %MW0:2]
5 0	LDN %SW81:X4

TILTIX MEMS AKS-3 INCLINOMETER WITH CANOPEN INTERFACE

8.5.3.10 Position Readout

0 *		LD 1
1 3/*		[%MW0 := 16#0003]
2 1/*		[%MW1 := 16#0001]
3 24592/*		[%MW2 := 16#6010]
4 0/*		[%MW3 := 16#0000]
5 18416/*	Position Value	[%MW4 := 16#0000]
6 0/*		[%MW5 := 16#0000]
7 * /*		[CAN_CMD1 %MW0:6]



8.5.3.11 Readout Using Animation Table



The position Readout is 18416 through the memory location %MW4 (Shown in the programming). We know that the resolution is set to 0.01°. TILTIX
Position Value = 18416 x 0.01° = 184.16°



TILTIX MEMS AKS-3 INCLINOMETER WITH CANOPEN INTERFACE

Illustration of measurement over full range: At initial position (approximately 0°):

	 Us	Address	Symbol	Current	Retained	Format
1		<input checked="" type="checkbox"/> %MW4		32	0	Decimal
2						



TILTIX Position Value = $32 * 0.01^{\circ} = 0.32^{\circ}$

At approximately 90°:

	 Us	Address	Symbol	Current	Retained	Format
1		<input checked="" type="checkbox"/> %MW4		9138	0	Decimal
2						



TILTIX Position Value = $9138 * 0.01^{\circ} = 91.38^{\circ}$

At approximately 180°:

	 Us	Address	Symbol	Current	Retained	Format
1		<input checked="" type="checkbox"/> %MW4		18052	0	Decimal
2						

TILTIX Position Value = $18052 * 0.01^{\circ} = 180.52^{\circ}$

At approximately 270°:

	 Us	Address	Symbol	Current	Retained	Format
1		<input checked="" type="checkbox"/> %MW4		27256	0	Decimal
2						

TILTIX Position Value = $27256 * 0.01^{\circ} = 272.56^{\circ}$

All the above position values were obtained by programming the position value output explicitly. The other method is very simple and direct.

Just run the controller and the same position values are obtained. The position is mapped with the

memory location %IWC1.0.0 or %IWC1.1.0 through PDO mapping done in the earlier steps. The steps for the mapping have been illustrated in above parts so that, in real time application, end users can directly follow the above steps to read out the position values from the mapped memory locations.

TILTIX MEMS AKS-3 INCLINOMETER WITH CANOPEN INTERFACE

8.5.4 Frequently Asked Question

What if the inclinometer doesn't respond after power on?

If the bus is active, then, the installed inclinometer is transmitting a false node number. If the bus is inactive, then, it was connected with an incorrect baud rate.

Possible solution may include addressing the node in pre-operational mode, addressing the inclinometer via SDO, trying to reset or power off or reprogramming the baud rate.

How to avoid malfunction of the position value during transmission?

During the transmission of the position value occasional malfunctions can occur. The CAN bus can be temporarily in the bus off state, too.

In order to avoid this problem, please check if the last bus nodes have the terminal resistor. The termination resistors at the ends of the CAN bus are generally used to avoid the reflection of information back into the bus. If the last bus node is a TILTIX Inclinometer the terminal resistor is to be activated through object 3002h.

When can too many ERROR-Frames appear?

The bus load maybe too high in case of too many error frames. So in this case check if all bus nodes have the same baud rate. Even if one node has a different baud rate, error frames are produced automatically.

Always ensure that the baud rate is set according to the defined TILTIX Baud rate table and once the baud rate has been changed, the CAN bus has to be restarted with the communication changed to the recently set baud rate.

What does unexpected module / Module missing / Wrong Module errors refer to?

Improper definition of node address or improper loading of EDS file generally leads to such errors. It is best to reinitialize the CAN bus or re-install the EDS file.

The node state stopped upon loading and initialization!

It occurs mostly because the bus transmission timeout is defined shorter than the TILTIX transmission time. So it is best to increase the bus timeout period (Approximately 2 – 3 seconds).

Unable to change to another node number?

If all nodes are found to be in operational mode, then follow the next few steps to set the required node number to a selected device.

Calculate the required node number in hexadecimal. (TILTIX is internally programmed to add 1 to any node number change fed to it, in order to avoid the node number 0; Range of Node Numbers: 1 – 127). For example if we want a NN=28 decimal, we need to feed 27 decimal (27+1=28). So the NN 1B hex has to be fed in order to set the selected device to node number 28.

Send a write telegram to the particular node, with 1B as data on the object 3000h.

Use 2300h to save the parameters with the reset.

A boot up message with the new node number pops up.

TILTIX MEMS AKS-3 INCLINOMETER WITH CANOPEN INTERFACE

What is the significance of boot-up message?

```
Rx      0701  1  00
```

The boot up message signifies that the node is active and can communicate. The node number can be identified from the boot-up message.

NN = 701h – 700h = 1h = 1

What is the difference between operational and pre-operational mode?

The main difference between the modes is that in pre-operational mode only service data objects (SDOs) can be programmed whereas in operational mode all device functionalities SDOs, PDOs can be programmed.

Modification of parameters in the operational mode may sometimes have unexpected consequences and should therefore be avoided.

How to read position value?

Send a message to the TILTIX to read out the position data object (6010h/6020h). The current position is calculated and is given out as a reply to the above message.

For example, the position data is given out as 0EF8 hex, this is 3832 in decimal. If the resolution is 0Ahex (0.01°) then the position value is (position output in decimal X Resolution), 3832 X 0.01° = 38.32°.

Why are there different types of storing and re-storing?

Object 2300h can be used to save all the parameters in the non-volatile memory at once. But when we use object 1010h for storing and object 1011h for re-storing there are a lot of options available – Communication, Application, Manufacturer or all parameters. It enables the user to store specific types of objects without disturbing

the other configurations. Hence, this gives the user ease and flexibility for storing only particular objects.

How to send sync message?

A sync message can be sent using COB-ID Sync object – 1005h. The default COB-Id value is 0x80. Upon receiving a message with the COB-ID and sync object, the TILTIX TPDO replies with the current position value. A general sync telegram will have the following parameters:

- COB-ID 080 (Default)
- Data Bits 8
- Read/Write Read (40)
- Object 1005
- Sub-Index 0
- Data Bits None

How to configure PDO Transmission?

The position value can be transmitted in various modes using PDO objects. The modes can be configured according to the user's requirement.

- Sync Mode
This mode allows the user to receive the position value only if requested. Change the transmission type of the corresponding TPDO communication object (1800h/1801h) to sync mode by writing 1HEX to sub-index 2.
Once back in operational mode, the user needs to transmit a sync message when a position value is required. The TILTIX replies with current position value through the TPDO COB-ID (Default: 0x181 for TPDO 1 & 0x281 for TPDO 2).
- Cyclic Mode
This mode allows the user to receive the position values at a constant interval. Change the transmission type of the corresponding TPDO communication object (1800h/1801h) to cyclic mode by writing 254

TILTIX MEMS AKS-3 INCLINOMETER WITH CANOPEN INTERFACE

(FE Hex) to sub-index 2. Make sure that the cyclic timer is set to the value of the required interval.

Once in operational mode, the TILTIX shall start transmitting the position output at a constant interval, with the TPDO COB-ID (Default: 0x181 for TPDO 1 & 0x281 for TPDO 2).

- State Change Mode

This mode enables the user to receive position data only when there is a change in its value.

Change the transmission type of the corresponding TPDO communication object (1800h/1801h) to state change mode by writing 255 (FF Hex) to sub-index 2. Make sure that the inhibit timer is also set as required.

Once in operational mode the TILTIX outputs the position only if there is a change in its value.

How to calculate the inhibit time?

The inhibit time sets the minimum time between two process values. The value is defined as multiples of 100µs. For example, assume we set the inhibit timer (Object 1800h/1801h) sub-index 3 to 1000d (03E8hex). The inhibit time is set to 100ms (1000 x 100µs). It is not allowed to change the inhibit time while the PDO exists.

Unable to set preset?

While setting preset there are a few considerations like resolution and range that have to be taken into consideration. The resolution of the TILTIX set by the user defines the range of the values that can be set. Hence, while setting the preset the user has to be careful to be within range.

What is a moving average filter?

The moving average filter is a kind of simple low pass filter. In TILTIX the moving average is used to dampen the effects due to external influences like vibrations. 0 means that the filter is deactivated. The user can define the array size in the range of 1-250 (decimal). Once the array size is defined the TILTIX takes an average of the position data array for the final position output.

What are the considerations while setting the resolution of TILTIX?

The resolution can be set with the object 6000h. If attribute "resolution" is changed, side effects will occur while the sensor is adapting the set parameters to the configured resolution. This is because many other objects/parameters are set based on the resolution. Rounding effects have to be taken into account. Attributes affected:

Write/Read: Preset Slope Long16, Preset Slope Lateral16, Differential Slope Long16 Offset, Differential Slope Lateral16 Offset, Preset Slope Long32, Preset Slope Lateral32, Differential Slope Long32 Offset, Differential Slope Lateral32 Offset;

Read Only: Slope Long16, Slope Lateral16, Slope Long16 Offset, Slope Lateral16 Offset, Slope Long32, Slope Lateral32, Slope Lateral32 Offset, Slope Lateral32 Offset.

What is scaling and inversion? Explain with example?

Scaling and inversion are functionalities which are included in TILTIX to make the user handle and process the position output according to his need. This is generally controlled by the operation parameter objects (6011h / 6021h).

TILTIX MEMS AKS-3 INCLINOMETER WITH CANOPEN INTERFACE

For example: Assume that the slope offset value is A8 and differential offset value is 0.

Scaling	Inversion	Position Value (in hex)
0	0	1043
0	1	EFBD
1	0	10EB
1	1	F065

- If 00, then position value is the actual position 1043 hex.
- If 01, then the position value is just inverted (-1043). This is (10000h – 1043) = EFBD hex.
- If 10, then the position is just scaled. (1043 + A8) is 10EB hex.
- If 11, then the position is inverted and scaled. Therefore, the new position value is (EFBD + A8) F065 hex.



If saving or restoring not all but only part of the parameters (communication, application or manufacturer parameters), Cyclic Time (object 2200) and Preset X, Preset Y (80° version, objects 2600 and 2601) or Preset (360° version, object 2600) show a special behavior: Preset parameters work the same way, with the application parameters (objects 6xxx) having the higher priority.

Slope long16, slope lateral16, slope long32 and slope lateral32 show the sensor output in the current resolution without any decimal point.



Terminal resistor is only activated, if the device is powered! This could lead under specific network conditions to problems.

TILTIX MEMS AKS-3 INCLINOMETER WITH CANOPEN INTERFACE

8.5.5 Appendix A: TILTIX CANopen Objects

(ro- Read Only, wo- Write Only & rw – Read or Write)

8.5.5.1 Object 1000h: Device Type

The object at index 1000h describes the type of device and its functionality. It is composed of a 16-bit field which describes the device profile that is used and a second 16-bit field which gives additional information about optional functionality of the device. The additional information parameter is device profile specific.

Subindex	Description	Data Type	Default Value	Access
0	–	Unsigned 32	0X4019A ¹ 0X3019A ²	ro

1) Dual Axis

2) Single Axis

8.5.5.2 Object 1001h: Error Register

This object is used by the device to display internal faults. If a fault is detected, the corresponding bit is activated. The following errors are supported.

Bit	Description	Comments
0	Generic Error	The generic error is signaled at any error situation

The object description for error register.

Subindex	Description	Data Type	Default Value	Access
0	–	Unsigned 8	N/A	ro

8.5.5.3 Object 1003h: Pre-Defined Error Field

The object holds the errors that have occurred on the device and have been signaled via the Emergency Object. The error code is located in the least significant word and additional information is located in the most significant word. Sub-index 0 contains the number of recorded errors.

Subindex	Description	Data Type	Default Value	Access
0	Number of recorded errors	Unsigned 8	0	rw
1	Most recent errors	Unsigned 32	–	ro

To clear error Log: Write data 0 into sub-index 0 of object 1003.

TILTIX MEMS AKS-3 INCLINOMETER WITH CANOPEN INTERFACE

8.5.5.4 Object 1005h: COB-ID Sync

This object indicates the configured COB-ID of the synchronization object. In operational mode, sensor sends process data if SYNC message with same COB-ID is received. (Correct setting of transmission type of TxPDO(s) implied)

Subindex	Description	Data Type	Default Value	Access
0	–	Unsigned 32	0x80	rw

8.5.5.5 Object 1008h: Mfr Device Name

This object contains the device name.

Subindex	Description	Data Type	Default Value	Access
0	–	String	–	ro

8.5.5.6 Object 1009h: Mfr Hardware Version

This object contains the hardware version of the circuit board.

Subindex	Description	Data Type	Default Value	Access
0	–	String	–	ro

8.5.5.7 Object 100Ah: Mfr Software Version

This object contains the manufacturer software version. The CA01 line has a major revision of 2. (02.xx)

Subindex	Description	Data Type	Default Value	Access
0	–	String	–	ro

8.5.5.8 Object 100Ch: Guard Time

This object contains the guard time in milliseconds

Subindex	Description	Data Type	Default Value	Access
0	–	Unsigned 16	0	rw

TILTIX MEMS AKS-3 INCLINOMETER WITH CANOPEN INTERFACE

8.5.5.9 Object 100Dh: Life Time Factor

This object contains the life time factor parameters. The life time factor multiplied with the guard time gives the life time for the node guarding protocol.

Subindex	Description	Data Type	Default Value	Access
0	–	Unsigned 8	0	rw

8.5.5.10 Object 1010h: Store Parameters

This object controls the saving of all writable parameters in non-volatile memory.

Subindex	Description	Data Type	Default Value	Access
0	Number of sub indices	Unsigned 8	4	ro
1	Save all parameters	Unsigned 32	–	rw
2	Save communication parameters	Unsigned 32	–	rw
3	Save application parameters	Unsigned 32	–	rw
4	Save manufacturer parameters	Unsigned 32	–	rw

Storing Procedure: To save the parameters to non-volatile memory, the access signature “save” has to be sent to the corresponding sub-index of the device.

	Most Significant Word		Least significant word	
ASCII	e	v	a	s
Hex value	65h	76h	61h	73h

TILTIX MEMS AKS-3 INCLINOMETER WITH CANOPEN INTERFACE

8.5.5.11 Object 1011h: Restore Parameters

This object is used to restore device and CANOpen related writeable parameters to default factory settings.

Restore command does not affect baud rate, node number, termination resistor and auto bootup.

Subindex	Description	Data Type	Default Value	Access
0	Number of sub indices	Unsigned 8	4	ro
1	Restore all parameters	Unsigned 32	–	rw
2	Restore communication parameters	Unsigned 32	–	rw
3	Restore application parameters	Unsigned 32	–	rw
4	Restore manufacturer parameters	Unsigned 32	–	rw

Loading procedure: To load the parameters from non volatile memory the access signature “load” has to be sent to the corresponding subindex of the device.

	Most Significant Word		Least significant word	
ASCII	d	a	o	l
Hex value	64h	61h	6Fh	6Ch

Subindex	Description	Data Type	Default Value	Access
0	–	Unsigned 16	0x80+Node-ID	rw

Note: A power off/on sequence is required for the restoration to take place after the message has been transmitted.

8.5.5.12 Object 1014h: COB-ID Emergency

This object indicates the configured COB-ID for the emergency write service. This has the highest priority among transmitted messages.

Subindex	Description	Data Type	Default Value	Access
0	–	Unsigned 32	0x81	rw

TILTIX MEMS AKS-3 INCLINOMETER WITH CANOPEN INTERFACE

8.5.5.13 Object 1016h: Consumer Heartbeat Time

The consumer heartbeat time defines the expected heartbeat cycle time in ms. The device can only monitor one corresponding device. If the time is set to 0 the monitoring is not active. The value of this object must be higher than the corresponding time (object 1017) of the monitored device.

Subindex	Description	Data Type	Default Value	Access
0	Number of indices	Unsigned 8	1	ro
1	Consumer heartbeat time	Unsigned 32	0	rw

The context of subindex 1 is as follows:

Bit	31 to 24	23 to 16	15 to 0
Value	0h (reserved)	Address of monitored device (Node-ID)	Monitoring time (ms)

8.5.5.14 Object 1017h: Producer Heartbeat Time

The object contains the time interval in milliseconds in which the device has to produce a heartbeat message. The values are given in multiples of 1ms.

Subindex	Description	Data Type	Default Value	Access
0	–	Unsigned 16	0	rw

8.5.5.15 Object 1018: Identity Object

This object provides the general identification of the inclinometer.

Subindex	Description	Data Type	Default Value	Access
0	Number of entries	Unsigned 8	4	ro
1	Vendor Id	Unsigned 32	0x42	ro
2	Product Code	Unsigned 32	0x414b5333 : AKS3	ro
3	Revision Number	Unsigned 32		ro
4	Serial Number	Unsigned 32		ro

TILTIX MEMS AKS-3 INCLINOMETER WITH CANOPEN INTERFACE

8.5.5.16 Object 2300h: Save Parameter with Reset

With this object all parameters can be stored in the non volatile memory. All parameters are saved with an additional reset executed afterwards.

Subindex	Description	Data Type	Default Value	Access
0	Access code	Unsigned 32	55AAAA55h	wo

8.5.5.17 Object 2600h: Preset X-Axis (90° Version) / Preset (360° Version)

In TILTIX090 inclinometers, this object sets the X- desired value. It is hard-wired with objects 6012 and axis to the desired value. In TILTIX360 6112.
inclinometers, this object sets the Z-axis to the

Subindex	Description	Data Type	Default Value	Access
0	–	Integer 16	–	rw

The valid preset value ranges depend on the current resolution of the TILTIX. An error message will appear if the Preset value is out of range.

Angular Resolution	Range of Position Values		
	AxS-090-2	AxS-360-1	AxS-180-E/-F
1°	± 90	360	± 90
0.1°	± 900	3600	± 900
0.01°	± 9000	36000	± 9000

TILTIX MEMS AKS-3 INCLINOMETER WITH CANOPEN INTERFACE

8.5.5.18 Object 2601h: Preset Y-Axis (80° Version)

In TILTIX080 inclinometers, this object sets the Y-axis to a desired value. It is hard-wired with objects 6022 and 6122.

Subindex	Description	Data Type	Default Value	Access
0	–	Integer 16	–	rw

The valid preset value ranges depend on the current resolution of the TILTIX. An error message will appear if the preset value is out of range.

Angular Resolution	Range of Position Values		
	AxS-090-2	AxS-360-1	AxS-180-E/-F
1°	± 90	-	± 180
0.1°	± 900	-	± 1800
0.01°	± 9000	-	± 18000

After setting the Preset value a save command must be given in order to set the Preset value permanently.

8.5.5.19 Object 3000h: Node Number

This object contains the node number of the device.

The POSITAL standard node number is 01 decimal.

The valid node numbers range from 01 to 127.

Subindex	Description	Data Type	Default Value	Access
0	Node Number	Unsigned 8	1	Rw

NOTE: The new node number is only adopted after the device is reset, i.e. the node number needs to be saved prior to the reset to have an effect.

Programming example #3 Node Number (for NN=1):

Set Node Number (NN) to 50 Decimal

Step 1: Write 32h = 50dec

Identifier	DLC	Command	Index		Subindex	Service/Process data			
NN = 1		Download				Byte 4	Byte 5	Byte 6	Byte 7
601	8	22	00	30	00	32	00	00	00

TILTIX MEMS AKS-3 INCLINOMETER WITH CANOPEN INTERFACE

Step 2: Save this configuration by writing "save" to 1010Sub01

Identifier	DLC	Command	Index		Subindex	Service/Process data			
NN = 1		Download				Byte 4	Byte 5	Byte 6	Byte 7
601	8	22	10	10	01	73	61	76	65

Step 3: The sensor will adapt the new Node number after a reset!

8.5.5.20 Object 3001h: Baud rate

This object contains the baud rate of the device. Valid value ranges from 0 to 7.

Subindex	Description	Data Type	Default Value	Access
0	Baud rate	Unsigned 8	–	rw*

Eight different baud rates are provided. To adjust the baud rate only one byte is used. The default baud rate is 125 kB (03h).

Baud rate in kB	Stored Value in Object
20	00h
50	01h
100	02h
125	03h
250	04h
500	05h
800	06h
1000	07h

The new baud rate is only adopted after the device is reset, i.e. the baud rate needs to be saved prior to the reset to have an effect.

Programming example #4 Baudrate (for NN=1):

Set Baudrate to 500 kBaud

Step 1: Set Baudrate 3001Sub0 to 500kBaud (05h)

Identifier	DLC	Command	Index		Subindex	Service/Process data			
NN = 1		Download				Byte 4	Byte 5	Byte 6	Byte 7
601	8	22	01	30	00	05	00	00	00

TILTIX MEMS AKS-3 INCLINOMETER WITH CANOPEN INTERFACE

Step 2: Save Parameters and execute a reset. The reset is needed to restart the sensor with the configured Baudrate

Identifier	DLC	Command	Index		Subindex	Service/Process data			
NN = 1		Download				Byte 4	Byte 5	Byte 6	Byte 7
601	8	22	00	23	00	55	AA	AA	55

8.5.5.21 Object 3002h: Termination Resistor

This object is used to activate the termination resistor in case the TILTIX is used at the edges of the transmission line (to avoid reflection of data back into the line) and/or high transmission rates (>50kB).

Subindex	Description	Data Type	Default Value	Access
0	Activate Termination Resistor	Unsigned8	0	rw

For Activation¹ – Write 1 decimal to the sub index 0 of the object

For De-activation – Write 0 decimal to the sub index 0 of the object

1)Note: If activated, the termination resistor is only enabled while the device is powered.

8.5.5.22 Object 3005h: Auto Boot Up

With this flag the startup behavior of the encoder is defined.

Subindex	Description	Data Type	Default Value	Access
0	Auto Boot Up	Unsigned 8	0	rw

True: After power up, the encoder enters the state operational autonomously without receiving a NMT start command.

False: After power up, the encoder enters the state Pre-Operational. This is the standard behavior of CANopen devices

TILTIX MEMS AKS-3 INCLINOMETER WITH CANOPEN INTERFACE

8.6 Object 3200h: Angle Mode

The Angle Mode (measurement axis) of the inclinometer can be changed by setting of the Angle Mode Object 3200h, e.g. a single axis inclinometer can be re-configured as dual axis inclinometer and vice versa.

Whenever the angle mode is changed, the following objects are reset to default values:

- **Device Type 1000h**
- **TPDO mapping 1A00h and 1A01h**
- **Range limits 3300h and 3301h**
- **And all device profile objects used for configuration.**

For saving the angle mode change, the Save all parameters command of object 1010h Sub 01 must be used.

Resolution 6000h and Scaling 6011h, 6021h, 6111h, 6121h are not reset automatically after changing of angle mode and therefore must be adjusted manually. This object is only available for AxS-xxx-x-**CA03** versions

Subindex	Description	Data Type	Min	Max	Default Value	Access
00h	Angle Mode	Unsigned 8	1	4	-	rw

Value	Description	Related Type key ACS-xxx-x-CA01-xx3-xx
1	Pitch, Roll $\pm 85^\circ/\pm 180^\circ$ horizontal mounting	AxS- 180-E -CA01- H x3-xx
2	2 Axes $\pm 90^\circ$	AxS- 090-2 -CA01- H x3-xx
3	1 Axis 360°	AxS- 360-1 -CA01- V x3-xx
4	Pitch, Roll $\pm 85^\circ/\pm 180^\circ$ vertical mounting	AxS- 180-F -CA01- V x3-xx

8.7 Object 3250h: Preset Mode

There are two different preset modes available for the angle versions with pitch and roll output.

Subindex	Description	Data Type	Min	Max	Default Value	Access
00h	Preset Mode	Unsigned 8	0	1	0	rw/ro

0 = Backwards compatible preset logic. The preset is simply added to the output value.

1 = New preset logic based on preserved angle ranges with shifted 0 position. The position limits stay the same and the turning point where the graph switches from positive to negative slope moves across the physical position. This object is only available for AxS-xxx-x-CA03 versions

Check diagram in appendix 12.3 for reference.

8.8 Object 3300h: Range Limit Slope Long

With this object, the minimum and maximum output range of the inclinometers slope long angle can be limited. Range limits are set with the current resolution.

Subindex	Description	Data Type	Min	Max	Default Value	Access
----------	-------------	-----------	-----	-----	---------------	--------

TILTIX MEMS AKS-3 INCLINOMETER WITH CANOPEN INTERFACE

00h	Number of Entries	Unsigned 8	-	-	2	ro
01h	Range Minimum	(Un)signed 32				rw
02h	Range Maximum	(Un)signed 32				rw

8.9 Object 3301h: Range Limit Slope Lateral

With this object, the minimum and maximum output range of the inclinometers slope lateral angle can be limited. Range limits are set with the current resolution.

Subindex	Description	Data Type	Min	Max	Default Value	Access
00h	Number of Entries	Unsigned 8	-	-	2	ro
01h	Range Minimum	Signed 32				rw
02h	Range Maximum	Signed 32				rw

8.10 Object 3310h: Angle Hysteresis

With this object, the hysteresis can be set. Depending on the direction of rotation, the position value deviates from the physical position by the set hysteresis value [0.001°]. This object is only available for AxS-xxx-x-CA03 versions

Subindex	Description	Data Type	Min	Max	Default Value	Access
00h	Angle Hysteresis [0.001°]	Unsigned 16	0	65535	0	rw

8.10.1.1 Object 3350h: Acc Butterworth cut-off frequency

With this object, a low pass Butterworth filter of first order can be applied for the acceleration data output of object 3403h-3405h and 3423h-3425h and the cut-off frequency of this Butterworth filter can be set. This object is only available for AxS-xxx-x-CA03 versions

Subindex	Description	Data Type	Min	Max	Default Value	Access
00h	Acc Butterworth cut-off frequency	Unsigned 16	0	65535	0	rw

Acc Butterworth cut-off frequency Value	Description
0	off
1-65535	Cut-off frequency [mHz]

TILTIX MEMS AKS-3 INCLINOMETER WITH CANOPEN INTERFACE

8.10.1.2 Object 3351h Angular Rate Butterworth Filter

In this object, a Butterworth filter of first order and frequency can be set that affects the angular rate data output of the gyroscope of object 3400h-3402h and 3420h-3422h. This object is only available for AxS-xxx-x-CA03 versions

Subindex	Description	Data Type	Min	Max	Default Value	Access
00h	Highest sub-index supported	Unsigned 8	0	255	3	ro
01h	Filter Type	Unsigned 8	0	1	0	rw
02h	Cut-off Frequency	Unsigned 16	0	65535	0	rw

Filter Type Value	Description
0	Low pass
1	High pass

Cut-off Frequency Value	Description
0	off
1-65535	Cut-off frequency [mHz]

8.10.1.3 Object 3390h: Resolution Acceleration

This object sets the resolution of the acceleration data output objects 3403h-3405h, 341Ah-341Fh, 3423h-3425h and 3426h-342Bh. This object is only available for AxS-xxx-x-CA03 versions

Subindex	Description	Data Type	Min	Max	Default Value	Access
00h	Resolution Acceleration [μg]	Unsigned 16	1	65535	1000	rw

Value	Description
10000	10000 μg (10 mg)
1000	1000 μg (1 mg)
100	100 μg (0,1 mg)
10	10 μg (0,01mg)
1	1 μg (0,001 mg)

TILTIX MEMS AKS-3 INCLINOMETER WITH CANOPEN INTERFACE

8.11 Object 3391h: Resolution Angular Rate Gyroscope

This object sets the resolution of the Angular rate data output of the gyroscope of object 3400h-3402h, 3417h-3419h and 3420h-3422h. This object is only available for AxS-xxx-x-CA03 versions

Subindex	Description	Data Type	Min	Max	Default Value	Access
00h	Resolution Angular Rate Gyroscope [mdeg/s]	Unsigned 16	1	65535	100	rw

Resolution Angular Rate Gyroscope Value	Description
10000	10 °/s
1000	1 °/s
100	0,1 °/s
10	0,01 °/s
1	0,001 °/s

8.12 Object 3400h-3402h: Angular Rate Gyroscope 16

The sensor stores the measured rotation rates of the gyroscope in different objects. These values are calibrated and can be mapped to a PDO. The max range of the gyroscope sensor is +/- 500°/s. The following objects provide the calibrated rate of rotation in x axis

Object	Description	Data Type	Access
3400h	Angular Rate Gyroscope X axis 16	Signed 16	ro
3401h	Angular Rate Gyroscope Y axis 16	Signed 16	ro
3402h	Angular Rate Gyroscope Z axis 16	Signed 16	ro

Note: Resolution depends on 3391h

8.13 Object 3403h-3405h: Acceleration 16

The acceleration sensor stores the measured acceleration forces in different objects. These values are calibrated and can be mapped to a PDO. The max range of the acceleration sensor is +/- 4000 mg. (1 g = 9,81 m/s²). The following objects provide the acceleration value for each axis

Object	Description	Data Type	Access
3403h	Acceleration X-Axis 16	Signed 16	ro
3404h	Acceleration Y-Axis 16	Signed 16	ro
3405h	Acceleration Z-Axis 16	Signed 16	ro

Note: Resolution depends on 3390h

TILTIX MEMS AKS-3 INCLINOMETER WITH CANOPEN INTERFACE

8.14 Object 3411h: Temp MEMS 16

This object provides the temperature of the sensor (MEMS Sensor on the printed circuit board) with a resolution of 0,1 °C and accuracy of +/- 5°C

Subindex	Description	Data Type	Default Value	Access
0	Temp Gyro	Integer16		romap

8.15 Object 3413h-3416h: Rotational Quaternions 16

This object is only available for AxS-xxx-x-CA03 versions

Object	Description	Data Type	Resolution	Access
3413h	Quaternion scalar 16	Integer16	1/10000	romap
3414h	Quaternion X 16	Integer16	1/10000	romap
3415h	Quaternion Y 16	Integer16	1/10000	romap
3416h	Quaternion Z 16	Integer16	1/10000	romap

8.16 Object 3417h-3419h: Angular Rate Bias 16

These objects provide the Angular Rate Bias for each respective axis. The bias refers to the drift of gyroscope which is calculated by the algorithm. This bias (variable offset) is updated with every base sensor cycle (1ms). When integrating the angular rate values over an extended period, it is recommended to subtract the bias value from the angular rate to ensure accuracy. This object is only available for AxS-xxx-x-CA03 versions

Object	Description	Data Type	Access
3417h	Angular Rate Bias X-axis 16	Integer16	romap
3418h	Angular Rate Bias Y-axis 16	Integer16	romap
3419h	Angular Rate Bias Z-axis 16	Integer16	romap

Note: Resolution depends on 3391h

8.17 Object 341Ah-341Ch: Gravity 16

These objects provide the gravitational accelerations without the acceleration of motions. This object is only available for AxS-xxx-x-CA03 versions

TILTIX MEMS AKS-3 INCLINOMETER WITH CANOPEN INTERFACE

Object	Description	Data Type	Access
341Ah	Gravity X-axis 16	Integer16	romap
341Bh	Gravity Y-axis 16	Integer16	romap
341Ch	Gravity Z-axis 16	Integer16	romap

Note: Resolution depends on 3390h

8.18 Object 341Dh-341F: Non-gravitational acceleration 16

These objects provide the acceleration values from accelerated motions without the influence of gravity. This object is only available for AxS-xxx-x-CA03 versions

Object	Description	Data Type	Resolution	Access
341Dh	Non-gravitational acceleration X-axis 16	Integer16	Depending on 3390h	romap
341Eh	Non-gravitational acceleration Y-axis 16	Integer16		romap
341Fh	Non-gravitational acceleration Z-axis 16	Integer16		romap

Note: Resolution depends on 3390h

8.19 Respective 32 bit Objects Angular Rate, Acceleration

The following list shows the respective 32 bit objects for the Angular Rate, Acceleration 16 bit objects 3417h-341Fh. This object is only available for AxS-xxx-x-CA03 versions

Object Index	Sub	Description	Datatype	Access
3420h	00h	Rate X-axis 32	int32	romap
3421h	00h	Rate Y-axis 32	int32	Romap
3422h	00h	Rate Z-axis 32	int32	Romap
3423h	00h	Acceleration X-axis 32	int32	Romap
3424h	00h	Acceleration Y-axis 32	int32	Romap
3425h	00h	Acceleration Z-axis 32	int32	Romap
3426h	00h	Gravity X-axis 32	int32	Romap

TILTIX MEMS AKS-3 INCLINOMETER WITH CANOPEN INTERFACE

3427h	00h	Gravity Y-axis 32	int32	Romap
3428h	00h	Gravity Z-axis 32	int32	Romap
3429h	00h	Non-gravitational acceleration X-axis 32	int32	Romap
342Ah	00h	Non-gravitational acceleration Y-axis 32	int32	Romap
342Bh	00h	Non-gravitational acceleration Z-axis 32	int32	romap

8.20 Object 3450h: Diagnostics 16

This object provides the Process and Diagnostic data. This object is only available for AxS-xxx-x-CA03 versions

Subindex	Description	Data Type	Min	Max	Default Value	Access
00h	Diagnostics 16	Unsigned 16			0	ro

Process data / Diagnostic data

8-15	Bit 6-7	Bit 5	Bit 4	Bit 2-3	Bit 0-1
reserved	Temperature range status	Gyro MEMS Range Status	Acc MEMS Range Status	Slop lateral range status	Slope long range status

Value	Slope long/ lateral range status
0	Angle within range
1	Angle smaller than range
2	Angle larger than range

Value	Acc/Gyro MEMS Range Status
0	Status ok
1	Range exceeded

Value	Temperature range status
0	Temperature within range of -40°C ... +80°C
1	Temperature lower than -40°C
2	Temperature higher than +85°C

8.21 Object 6000h: Resolution

This object shall indicate the resolution of Slope long16 (object 6010h) and Slope lateral16 (object 6020h) objects based on 0.01°.

TILTIX MEMS AKS-3 INCLINOMETER WITH CANOPEN INTERFACE

Subindex	Description	Data Type	Default Value	Access
0	Resolution	Unsigned 16	–	rw

Three possible resolutions can be used:

Angular Resolution	Value decimal	Byte hex
0.01°	10	0Ah
0.1°	100	64h
1°	1000	3e8h

8.22 Object 6010h: Slope Long16 Position Value X-Axis/Longitudinal Axis (dual axes), Z-Axis (single axis), or Pitch-Axis (Pitch and Roll)

For dual axes inclinometers, this object provides the X-axis position value and for single axis inclinometers, this object provides the Z-axis value. This is a read only object and the position values are limited depending on the resolution set.

Subindex	Description	Data Type	Default Value	Access
0	–	Signed Integer 16 – dual axis Unsigned Integer 16 – one axis	–	ro

Angular Resolution	Range of Position Values	
	TILTIX090	TILTIX360
1°	± 90	360
0.1°	± 900	3600
0.01°	± 9000	36000

Calculation of position / slope value from CANopen readout:

Inclination (Degree) = Slope Long 16[Object 6010] x Resolution [Object 6000]



If attribute “resolution” is changed, side effects will occur, as the sensor is adapting the already set parameters to the configured resolution. Rounding effects have to be taken into account. Attributes affected: write/read: preset slope long16, preset slope lateral16, differential slope long16 offset, differential slope lateral16 offset, preset slope long32, preset slope lateral32, differential slope long32 offset, differential slope lateral32 offset; read only: slope long16, slope lateral16, slope long16 offset, slope lateral16 offset, slope long32, slope lateral32, slope lateral32 offset, slope lateral32 offset.

TILTIX MEMS AKS-3 INCLINOMETER WITH CANOPEN INTERFACE

8.22.1.1 Object 6011h: Slope Long16 Operating Parameter

This object controls the scaling and inversion of the slope long16 values. If bit 0 is set, inversion of slope long16 is enabled. If bit 1 is set, slope long16 offset and differential slope long16 offset are added to the slope long16. Both bits can be set at the same time.

Subindex	Description	Data Type	Default Value	Access
0	Position Scaling and Inversion	Unsigned 8	00	rw

Calculation of position value based on the operating parameter:

Slope Long16 = [(Physical inclination of slope long16 * Multiplier) + Slope long16 Offset + Differential Slope long16 Offset]. With:

- Physical inclination of slope long16 (X)
- Multiplier: if inversion is disabled: 1, if inversion is enabled: -1
- Slope Long16 Offset (6013) = Slope Long16 Preset (6012) – (Physical inclination of slope long16 (X) at tacc * Multiplier), with tacc = preset acquisition time
- Differential slope long16 offset (6014): Adds an absolute value (positive or negative) to the sensor

Bit 1	Bit 0	Position Calculation
0	0	X
0	1	-X
1	0	(X + Object 6013h + Object 6014h)
1	1	(-X + Object 6013h + Object 6014h)

For detailed explanation please see the corresponding objects.

8.22.1.2 Object 6012h: Slope Long16 Preset Value

This object is used to define a new, desired longitudinal slope value. The values will be set only according to the current resolution, so extreme care should be taken in order to be within the range of the position value limits.

Subindex	Description	Data Type	Default Value	Access
0	Preset Value	Integer 16	00	rw

Resolution	Preset Range (in decimal)	
Type	TILTIX090	Type

TILTIX MEMS AKS-3 INCLINOMETER WITH CANOPEN INTERFACE

1°	± 90	360
0.1°	± 900	3600

Programming example #5 Preset Value (for NN=1):

Preset Value - Set the current position to 1°

Step 1: Set preset value to 64h. If the resolution is set to 0,01°, 64h is equal to 1° (Note: If the resolution is set to 0.1°, the preset value must be set to Ah to set the current position to 1°)

Identifier	DLC	Command	Index		Subindex	Service/Process data			
NN = 1		Download				Byte 4	Byte 5	Byte 6	Byte 7
601	8	22	00	26	00	64	00	00	00

Step 2: Save this configuration by writing "save" to 1010Sub01

Identifier	DLC	Command	Index		Subindex	Service/Process data			
NN = 1		Download				Byte 4	Byte 5	Byte 6	Byte 7
601	8	22	10	10	01	73	61	76	65

8.22.1.3 Object 6013h: Slope Long16 Offset

This is a read only parameter. The parameter is recalculated every time Slope Long16 preset (6012h), Slope Long32 Preset (6112) or Preset X (2600) objects are changed.

Subindex	Description	Data Type	Default Value	Access
0	Offset Value	Integer 16	–	ro

Calculation of Slope Long16 Offset:

Offset Value = Preset Value – (Physical Value * Inversion)

[Inversion is -1 if activated; 1 if deactivated]

8.22.1.4 Object 6014h: Differential Slope Long16 Offset

This parameter adds an additional, independent offset to slope long16, but only if scaling of slope long16 is enabled. Please note that the values should be within the range of position attribute according to the resolution already set.

Subindex	Description	Data Type	Default Value	Access
0	Offset Value	Integer 16	–	rw

TILTIX MEMS AKS-3 INCLINOMETER WITH CANOPEN INTERFACE

The main difference between the objects 6013h and 6014h is that, 6013 is calculated automatically depending on the preset value whereas object 6014h is user defined.

8.23 Object 6020h: Slope Lateral16

Position Value Y-Axis (AxS-090-2 Lateral Axis) or Roll-Axis (AxS-180-E Pitch and Roll)

For dual axis inclinometers, this object provides the Y- or Roll-Axis position value. This is a read only object. The position values are limited depending on the resolution set.

Important: This object will output 0 for a sensor with one axis output

Subindex	Description	Data Type	Default Value	Access
0	–	Signed Integer 16	–	ro

Resolution	Preset Range (in decimal)
Type	AxS090
1°	± 90
0.1°	± 900
0.01°	± 9000

Calculation of position / slope value from CANopen readout:

Inclination (Degree) = Slope Lateral 16[Object 6020] x Resolution [Object 6000]

8.23.1.1 Object 6021h: Slope Lateral16 Operating Parameter

This object controls the scaling and inversion of the slope lateral16 values. If bit 0 is set, inversion of slope lateral16 is enabled. If bit 1 is set, slope lateral16 offset and differential slope lateral16 offset are added to the slope lateral16. Both bits can be set at the same time.

Subindex	Description	Data Type	Default Value	Access
0	Position Scaling and Inversion	Unsigned 8	00	rw

Calculation of position value based on the operating parameter:

Slope Lateral16 = [(Physical inclination of slope lateral16 * Multiplier) + Slope lateral16 Offset + Differential Slope lateral16 Offset]

With:

- Physical inclination of slope lateral16 (X)
- Multiplier: if inversion is disabled: 1, if inversion is enabled: -1
- Slope Lateral16 Offset (6023) = Slope Lateral16 Preset (6022) – (Physical inclination of slope lateral16 (X) at t_{acc} * Multiplier), with t_{acc} = preset acquisition time

TILTIX MEMS AKS-3 INCLINOMETER WITH CANOPEN INTERFACE

- Differential slope lateral16 offset (6024): Adds an absolute value (positive or negative) to the sensor output.

Bit 1	Bit 0	Position Calculation
0	0	X
0	1	-X
1	0	(X + Object 6023h + Object 6024h)
1	1	(-X + Object 6023h + Object 6024h)

For detailed explanation please see the corresponding objects.

8.23.1.2 Object 6022h: Slope Lateral16 Preset Value

This object is used to define a new, desired lateral slope value. The values will be set only according to the current resolution, so extreme care should be taken in order to be within the range of the position value limits.

Subindex	Description	Data Type	Default Value	Access
0	Preset Value	Integer 16	00	rw

Resolution	Preset Range (in decimal)
Type	AxS090
1°	± 90
0.1°	± 900
0.01°	± 9000

8.23.1.3 Object 6023h: Slope Lateral16 Offset

This is a read only parameter. The parameter is (2601) objects are changed. This object does not recalculated everytime Slope Lateral16 preset exist for TILTIX360 (6022h), Slope Lateral32 Preset (6122) or Preset Y

Subindex	Description	Data Type	Default Value	Access
0	Offset Value	Integer 16	–	ro

Calculation of Slope Lateral16 Offset:

Offset Value = Preset Value – (Physical Value * Inversion) [Inversion is -1 if activated; 1 if deactivated]

8.23.1.4 Object 6024h: Differential Slope Lateral16 Offset

This parameter adds an additional, independent offset to slope lateral16, but only if scaling of slope

TILTIX MEMS AKS-3 INCLINOMETER WITH CANOPEN INTERFACE

lateral16 is enabled. Please note that the values should be within the range of position attribute according to the resolution already set.

Subindex	Description	Data Type	Default Value	Access
0	Offset Value	Integer 16	–	rw

The main difference between the objects 6023h and 6024h is that, 6023h is calculated automatically depending on the preset value whereas object 6024h is user defined.

32-Bit Objects (61XX)

Object 6110 – 6114: Hardwired with 16-bit slope long16 objects.

Objects 6120 – 6124: Hardwired with 16-bit slope lateral16 objects.

8.23.1.5 Object 6114h: Differential Slope Long32 Offset (A_S360)

This parameter adds an additional, independent offset to the slope long32, but only if scaling of slope long32 is enabled. The values will be set only according to the current resolution, so extreme care should be taken in order to be within the range of the position value limits.

Subindex	Description	Data Type	Default Value	Access
0	Offset Value	Integer 32	–	rw

Resolution	Differential Offset Range (in decimal)
Type	A_S0360
1°	-179 to +180
0.1°	-1799 to +1800
0.01°	-17999 to +18000

TILTIX MEMS AKS-3 INCLINOMETER WITH CANOPEN INTERFACE

8.24 Respective 32 bit Objects Slope long/lateral

The following list shows the respective 32 bit objects for the slope long/lateral 16 bit objects 6010h-6024h

Object Index	Sub	Description	Datatype	Acess
6110h	00h	Slope long32	int32	romap
6111h	00h	Slope long32 operating parameter	uint8	rw
6112h	00h	Slope long32 preset	int32	rw
6113h	00h	Slope long32 offset	int32	ro
6114h	00h	Differential slope long32 offset	int32	rw
6120h	00h	Slope lateral32	int32	romap
6121h	00h	Slope lateral32 operating parameter	uint8	rw
6122h	00h	Slope lateral32 preset	int32	rw
6123h	00h	Slope lateral32 offset	int32	ro
6124h	00h	Differential slope lateral32 offset	int32	rw

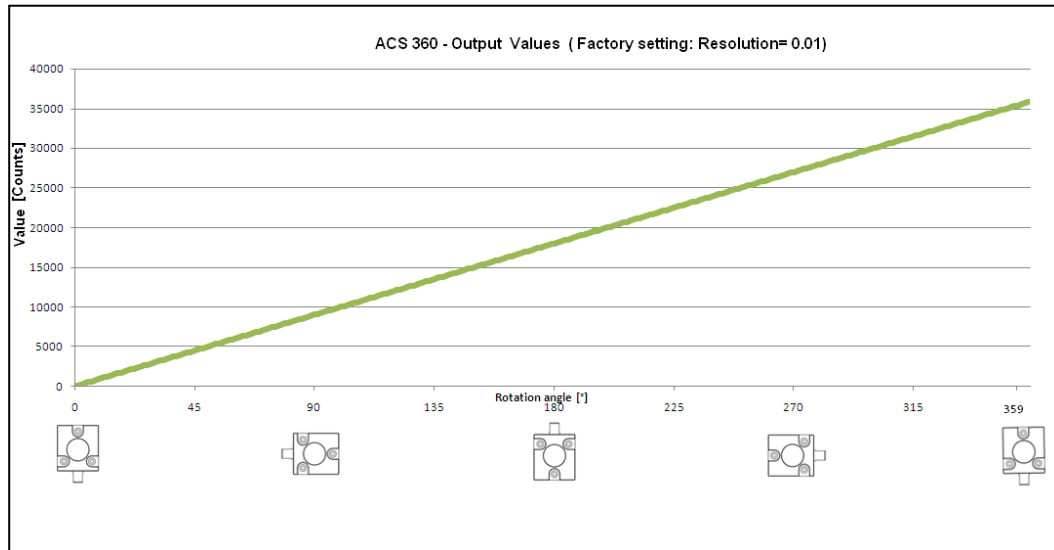


If saving or restoring not all but only part of the parameters (communication, application or manufacturer parameters), Cyclic Time (object 2200) and Preset X, Preset Y (80° version, objects 2600 and 2601) or Preset (360° version, object 2600) show a special behavior: Preset parameters work the same way, with the application parameters (objects 6xxx) having the higher priority.

TILTIX MEMS AKS-3 INCLINOMETER WITH CANOPEN INTERFACE

8.24.1 Appendix C: Output Graphs

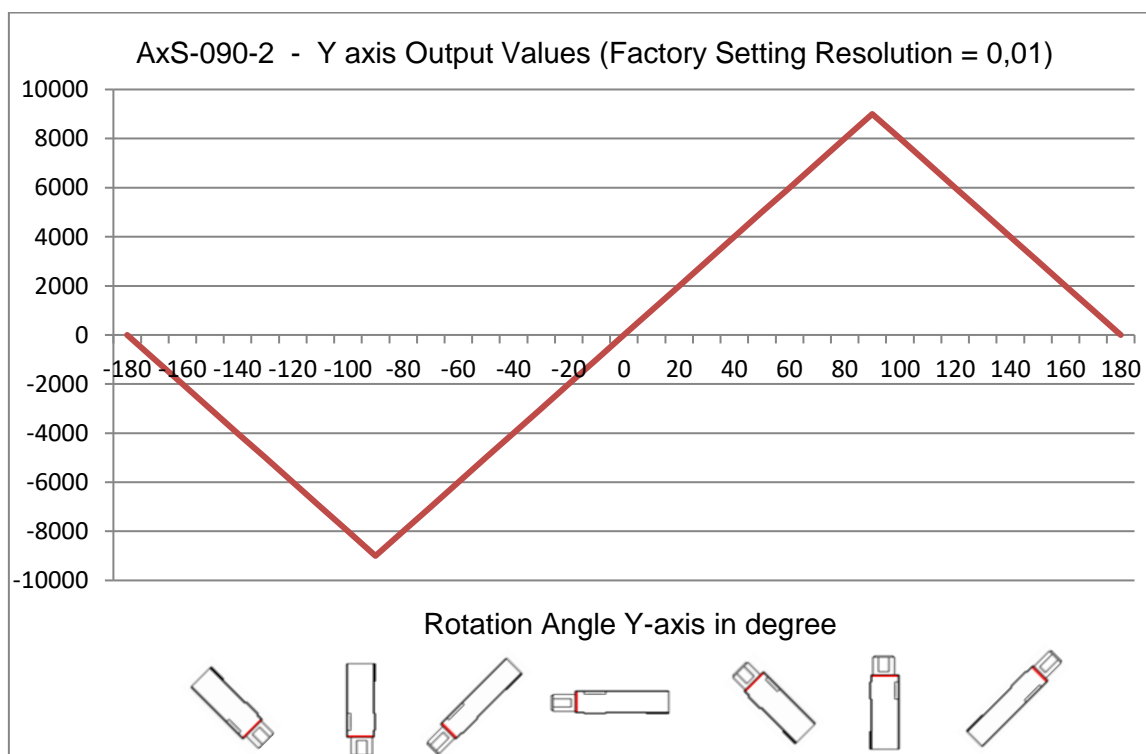
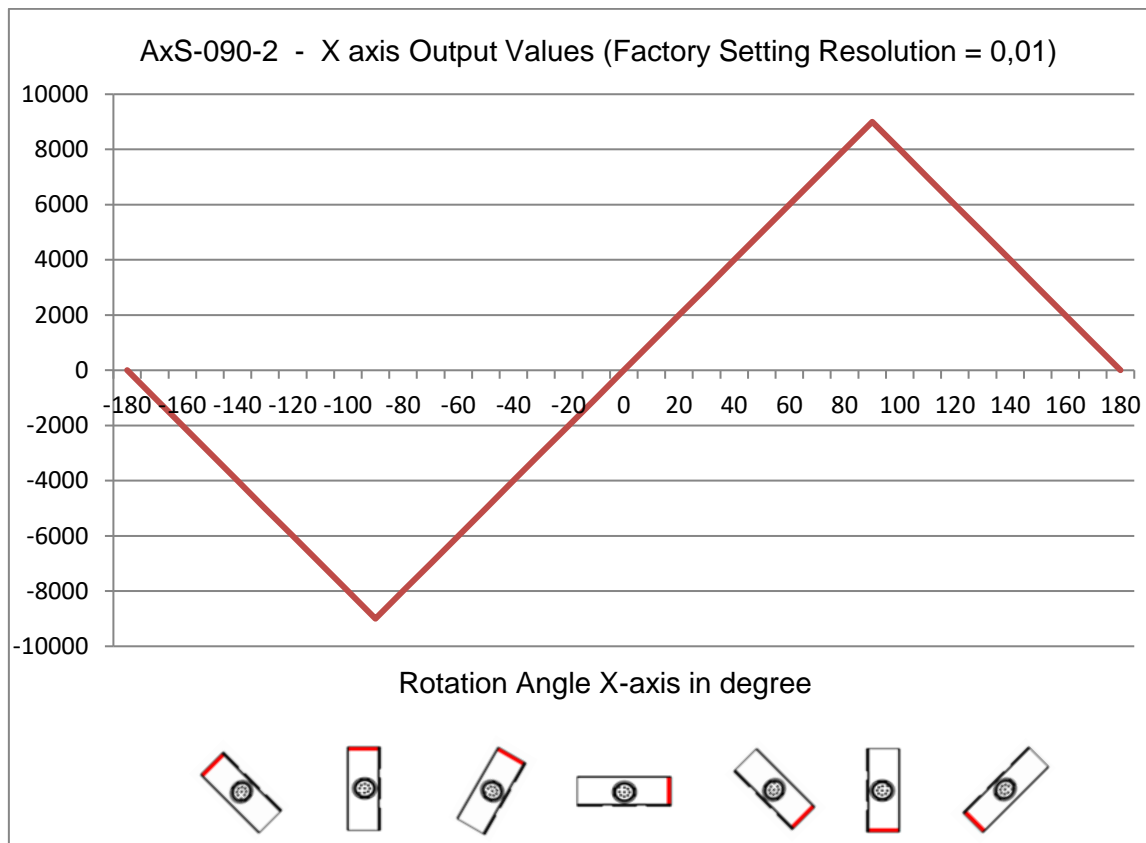
8.24.1.1 TILTIX 360: CANopen Output Values AxS-360-1-Cxxx-Vxx-xx



TILTIX MEMS AKS-3 INCLINOMETER WITH CANOPEN INTERFACE

8.24.1.2

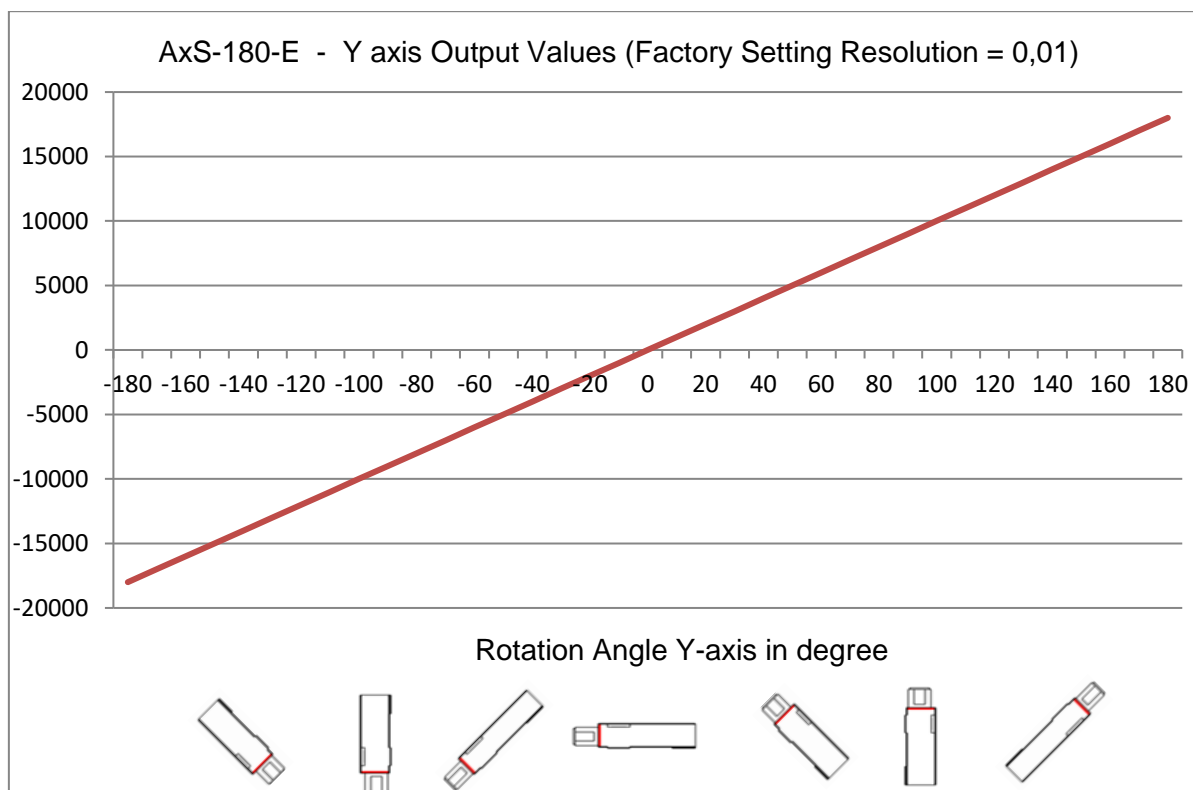
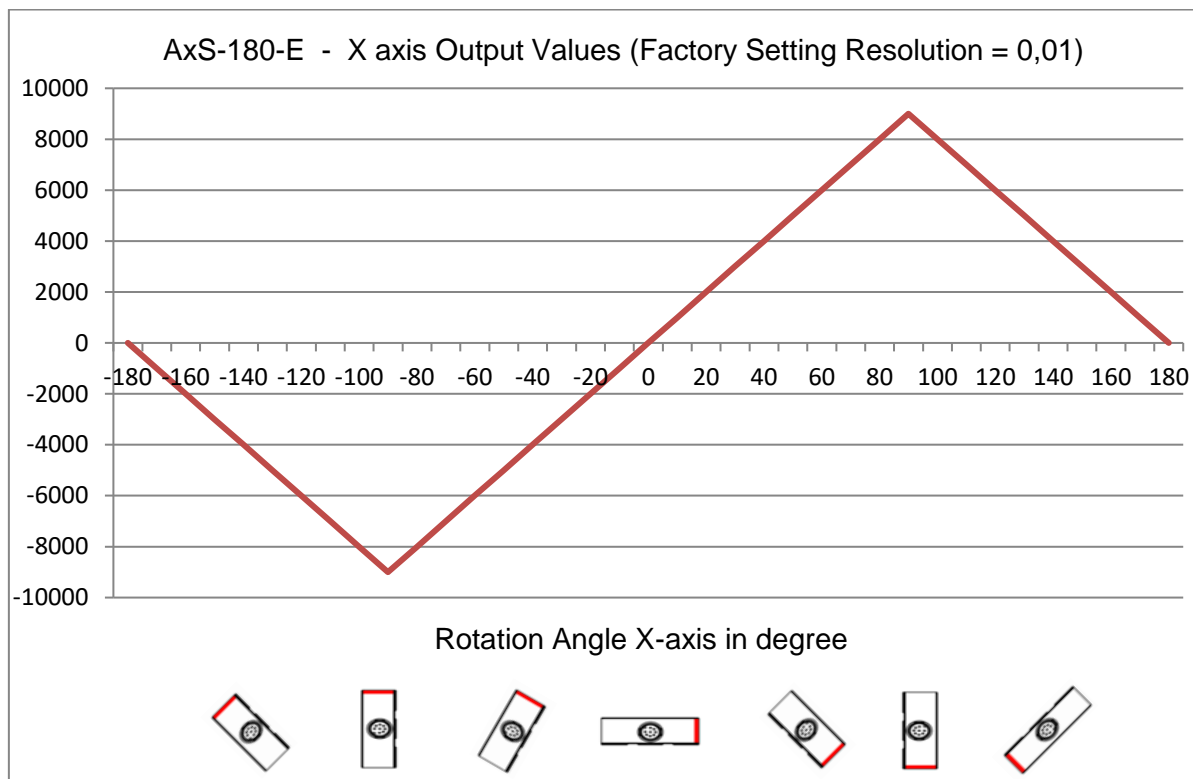
TITIX 090 : CANopen Output Values AxS-090-2-Cxxx-Hxx-xx



TILTIX MEMS AKS-3 INCLINOMETER WITH CANOPEN INTERFACE

8.24.1.3

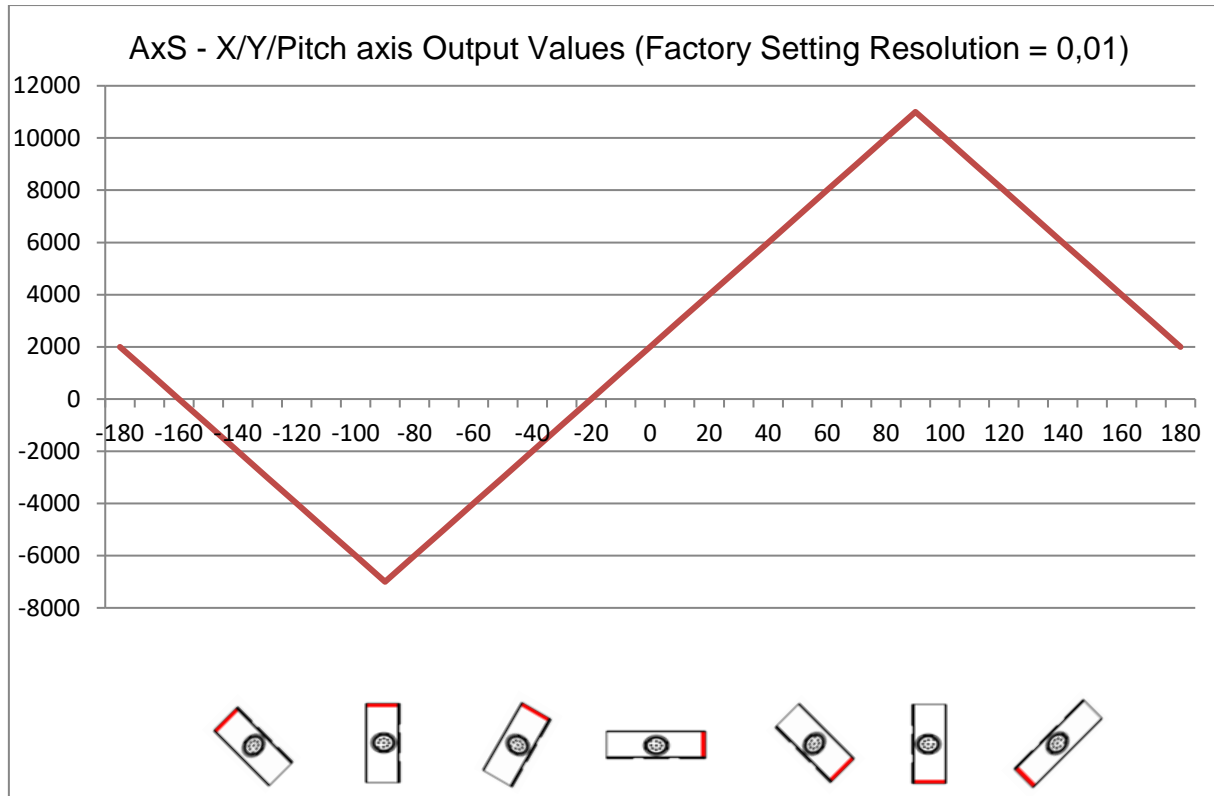
TITIX 180 : CANopen Output Values AxS-180-E-Cxxx-Hxx-xx



TILTIX MEMS AKS-3 INCLINOMETER WITH CANOPEN INTERFACE

8.24.2 Appendix D: Output Graphs with Preset and Offset

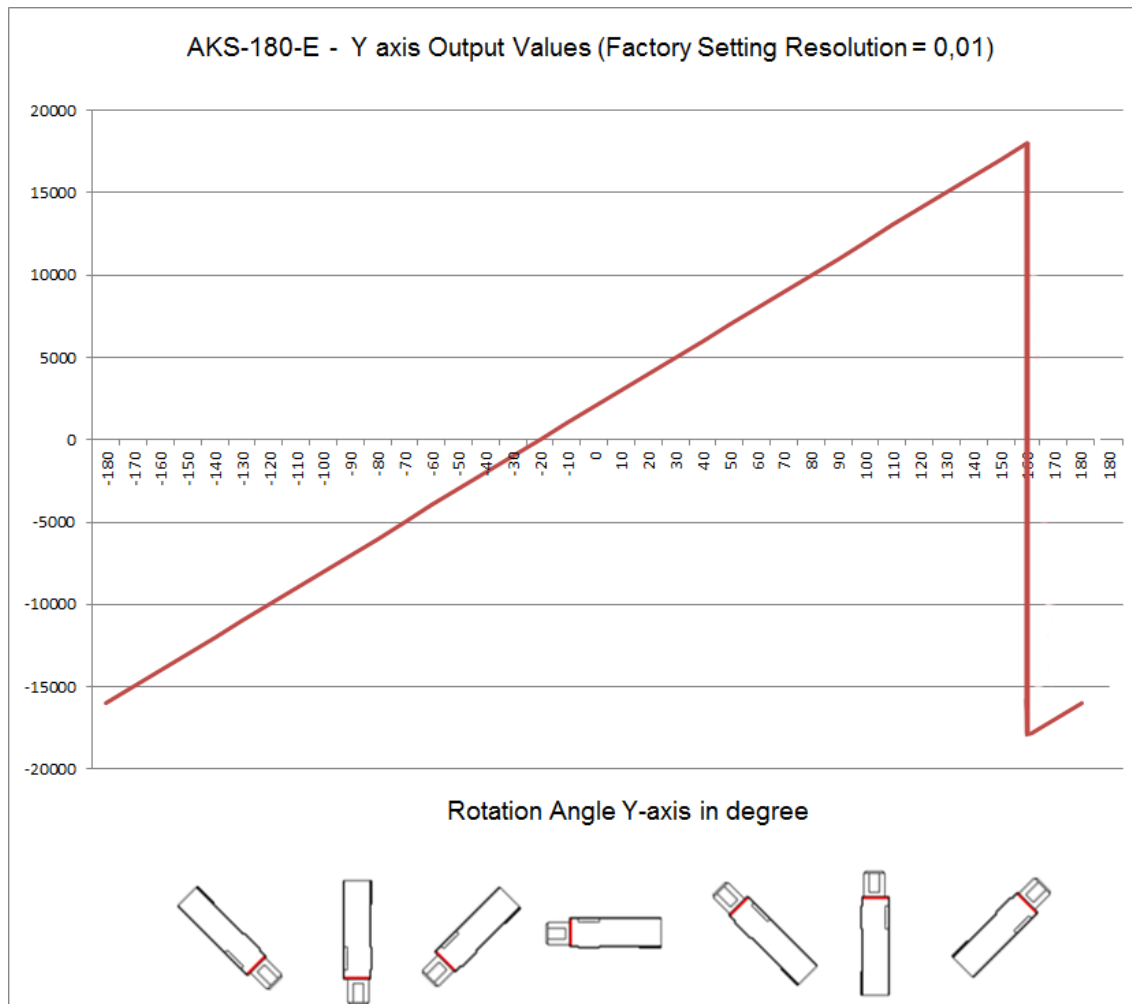
8.24.2.1 AxS with programmed offset of 20° and effect on X/Y/Pitch axis output



Explanation: The position limits are adjusted to $\pm 90^\circ + \text{offset}$. When an offset of $+20^\circ$ is programmed, the overall output range will be adjusted to -70° to 110° as seen in the graph. The result is that the turning point where the graph switches from positive to negative slope stay at the physical position of $\pm 90^\circ$.

TILTIX MEMS AKS-3 INCLINOMETER WITH CANOPEN INTERFACE

13.2 AxS with programmed offset of 20° and effect on Roll axis output



Explanation: The position limits stay $\pm 180^\circ$. This results that the jump from 180° to -180° will be shifted according to the programmed preset, as seen on the graph.

TILTIX MEMS AKS-3 INCLINOMETER WITH CANOPEN INTERFACE

8.24.3 Glossary

(For more detailed information refer to CiA's CAN Dictionary)

A

Address	Number, assigned to each node, irrespective of whether it is a master or slave. The inclinometer address (non-volatile) is configured in the base with rotary switches.
APV	Absolute Position Value.

B

Bandwidth transmitted	Bandwidth is the value, which denominates the size of information in a defined time unit.
Baud rate	Transmission speed formulated in number of bits per second. Bus node Device that can send and/or receive or amplify data by means of the bus.
Bit Rate	Number of bits per time during transmission, independent of bit representation. The bit rate in CAN networks is limited to 1 Mbit/s.
Bus	Topology of a communication network, where all nodes are reached by passive links. This allows transmission in both directions.
Byte	8-bit unit of data = 1 byte.

C

CAL	CAN application layer. Application layer developed by CiA (CAN in Automation) members providing several communication services and corresponding protocols.
CAN	Controller Area Network or CAN multiplexing network.
CANopen	Application layer of an industrial network based on the CAN bus.
CCW	Counter-clockwise
CiA	CAN In Automation, organization of manufacturers and users of devices that operate on the CAN bus.
CiA 410	The CANopen device profile for inclinometer supports 16-bit as well as 32-bit sensors
COB	Elementary communication object on the CAN network. All data is transferred using a COB.
COB-ID	COB-Identifier. Identifies an object in a network. The ID determines the transmission priority of this object. The COB-ID consists of a function code and a node number.
CW	Clockwise

E

Event Timer	The event timer is assigned in CANopen to one PDO. It defines the frequency of PDO transmission.
-------------	--

TILTIX MEMS AKS-3 INCLINOMETER WITH CANOPEN INTERFACE

F

FC Determines the type of message sent via the CAN network.
Function Code

H

Heartbeat CANOpen and DeviceNet use the heartbeat message to indicate that a node is still alive. This message is transmitted periodically.

Heartbeat Consumer The heartbeat consumer time defines time interval required by the monitoring node Time to verify, whether a monitored node is alive or not. In case, the monitored node transmits no heartbeat message within that time interval, it is regarded as not alive.

L

Line terminator Resistor terminating the main segments of the bus.

LMT Network management object. This is used to configure the parameters of each layer in the CAN. Master "Active" device within the network, that can send data without having received a request. It controls data exchange and communication management.

N

NMT Network management object. This is responsible for managing the execution, configuration and errors in a CAN network.

NN Node number

P

PCV Process Value

PDO Communication object, with a high priority for sending process data.

PV Preset Value: Configuration value

R

RO Read Only: Parameter that is only accessible in read mode.

ROMAP Read Only MAPable: Parameter that can be polled by the PDO.

RW Read/Write: Parameter that can be accessed in read or write mode.

S

SDO Communication object, with a low priority for messaging (configuration, error handling, diagnostics). Slave Bus node that sends data at the request of the master. The inclinometers are always slaves.

W

TILTIX MEMS AKS-3 INCLINOMETER WITH CANOPEN INTERFACE

WO Write Only: Parameter that is only accessible in write mode.

TILTIX MEMS AKS-3 INCLINOMETER WITH CANOPEN INTERFACE

8.24.4 Contact

FRABA America

T +1 609 750-8705

- info@posital.com

FRABA Europe

T +49 221 96213-0

- info@posital.eu

FRABA Asia

T +65 6514 8880

- info@posital.sg

© FRABA B.V. all rights reserved. We do not assume responsibility for technical inaccuracies or omissions. Specifications are subject to change without notice.